

## Help for Adapt It Administrators

Most of the settings of interest to an administrator are on Adapt It's Administrator menu. This menu is normally hidden from view. It can only be shown and accessed under password control. To make the Administrator menu visible you can select the **Show Administrator Menu** menu item from the View menu. To initially show the Administrator menu you will need to use the [default password](#). Once you have access to the Administrator menu you can assign a personalized password for accessing the Administrator menu, however, the [default password](#) will always work to make the Administrator menu visible at any time.

The Adapt It team highly recommends that you take advantage of the Administrator menu's configuration options, since a careful setup can make it easier for a user to do productive work within Adapt It, and much easier to collaborate with a dedicated Scripture editor such as [Paratext](#) or [Bibleedit](#) .

## Adapt It Projects versus Paratext or Bibleedit Projects

Some of the discussion about establishing connections between Adapt It and Paratext or Bibleedit projects may be confusing if you are not aware of the different approaches these translation applications have to translation projects. Both Paratext and Bibleedit consider a project to involve the creation of a translation in only **one** language. These applications may bring in translation resources such as Bible translations in other languages to assist the human translator. Each translation resource is stored in a single Paratext or Bibleedit project.

Since Adapt It partially automates the translation process it involves the use of **two** languages in its projects:

- A source language text which has been prepared before the start of the project.
- A target language text which is developed as the output of the adaptation process.

Because Adapt It works with a minimum of two languages, collaboration requires the development of at least **two** projects in Paratext or Bibleedit for each Adapt It project:

1. A source project in Paratext or Bibleedit that already has text that can serve as the Adapt It source document.
2. A target project that is initially empty so that it can receive the target language text produced by Adapt It.

In addition, since Adapt It has the ability to create free translations, you may want to create another empty Paratext or Bibleedit project to receive the free translations.

Collaboration between Adapt It and either Paratext or Bibleedit means that the strengths of both translation applications are available to the translator in a relatively seamless process. When collaborating with Paratext or Bibleedit, Adapt It creates and maintains its own projects in project folders - just as it did in previous versions of Adapt It. But when collaborating with Paratext or Bibleedit, Adapt It automatically handles the transfer of source texts from Paratext or Bibleedit to its Adapt It's own project and automatically handles the transfer of adapted/target texts (and free translations) back to the appropriate Paratext or Bibleedit projects, where they can be revised, checked and polished in Paratext or Bibleedit.

One other difference between Adapt It and the other programs is that Adapt It stores documents at the chapter or book level. Paratext stores documents at the book level only. Bibleedit stores documents at the chapter level only. The collaboration process knows about this difference and is able to accommodate it. However, it does have implication for the planning process by the administrator. You need to plan ahead in determining what books are to be translated and the approach you want to use. The AI team recommends that you use a chapter by chapter approach consistently. Therefore working in collaboration uses the chapter by chapter approach by default. This means that, although Adapt It uses smaller

units in its own AI project, collaboration mode keeps the Paratext texts in book units, and the Bibledit texts in their chapter units.

Thus any organization method is supported. However, once you decide to use a book or a chapter as an adaptation unit you should keep using that unit throughout the work in a project. For a given book, you should not do adaptation work part of the time using the whole book approach and part of the time using a chapter by chapter approach.

[Back to Top](#)

Automatically exchange Scripture files with Paratext or Bibledit

If you use Paratext 7 or Bibledit, you can now set up Adapt It to collaborate directly with [Paratext](#) or [Bibledit](#) . Here are the steps:

Paratext

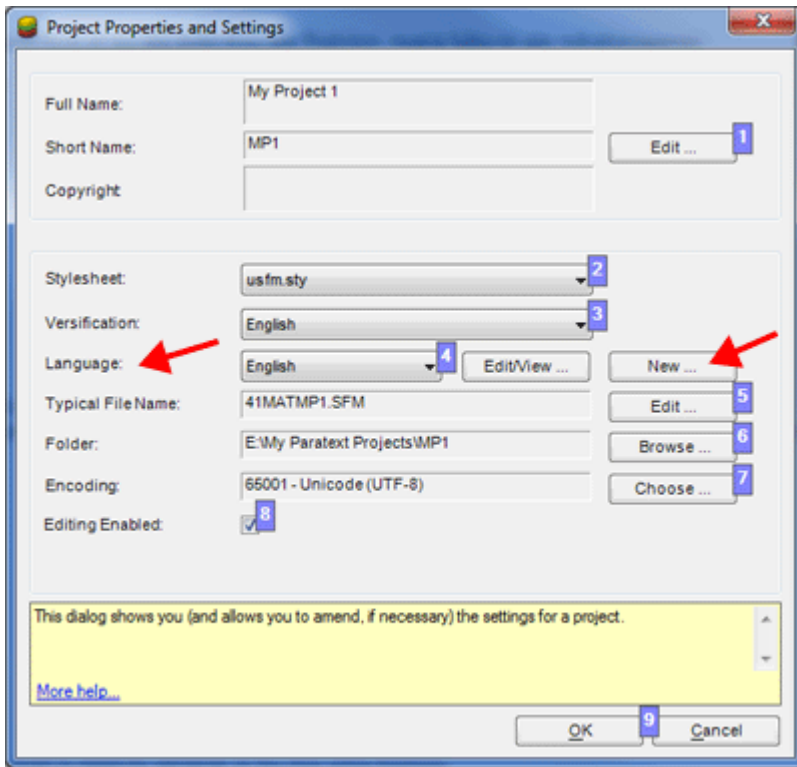
1. Ensure the needed versions of Adapt It (6.5.3 or newer is best) and Paratext (7.1 or newer) are installed

**IMPORTANT:** For Adapt It to collaborate with Paratext, you need to **install version 7.1 or newer of Paratext and version 6.5.3 or newer of Adapt It.** (Adapt It from 6.2.1 and onwards support collaboration, but are slightly buggy; 6.5.9 (unreleased) and 6.6.0 and onwards are robust.) Please use the most recent version of Adapt It available at <http://adapt-it.org>. If your version of Adapt It is not at least 6.5.9 or newer, you will need to download and install it. If you used Adapt It version 6.0.x or 6.1.x previously, please note that as of version 6.2.1, collaboration with Paratext can now be setup for individual Adapt It projects, and it is now the user's decision as to whether to turn collaboration on or off for a given Adapt It project. Therefore, if you have previously used version 6.0.x or 6.1.x of Adapt It for collaboration with Paratext, your collaboration settings will be preserved in upgrading to 6.2.1 or a later version, but please review the section below carefully for differences in how collaboration is now setup and used.

2. Prepare at least two Paratext projects for collaboration with Adapt It

**BEFORE** you set up Adapt It to collaborate with Paratext, you should ensure that Paratext has at least **TWO** projects set up -- one project for obtaining **source** texts, and a different project to receive the **translation drafts** produced by Adapt It. (You may also want to have a third project set up within Paratext for storing **Free translations**.) The **source** project needs to have completed texts, either imported from a source or completed in Paratext. It is best if you include *all* texts that are to be translated in the project. However, you can add books piecemeal to Paratext as the work progresses, and Adapt It will accomodate that happily.

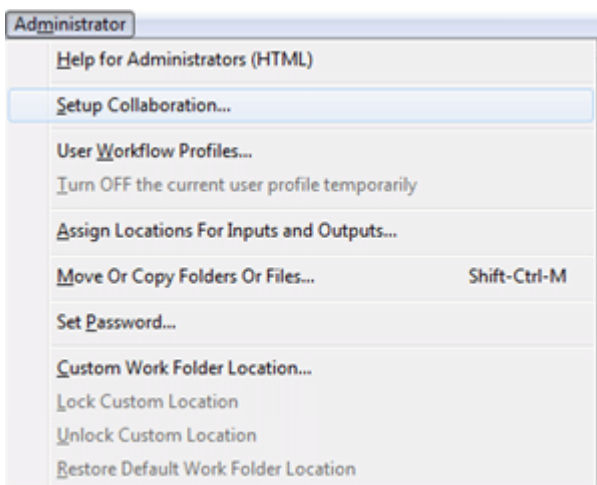
The project(s) that are to receive the translation draft (and free translation, if desired) need to be established as well. These projects need to contain "**empty**" books which include the chapter and verse USFM markers. There needs to be an empty book to correspond to each of the books in the source project. The USFM markers are necessary for Adapt It to properly place the draft translations.



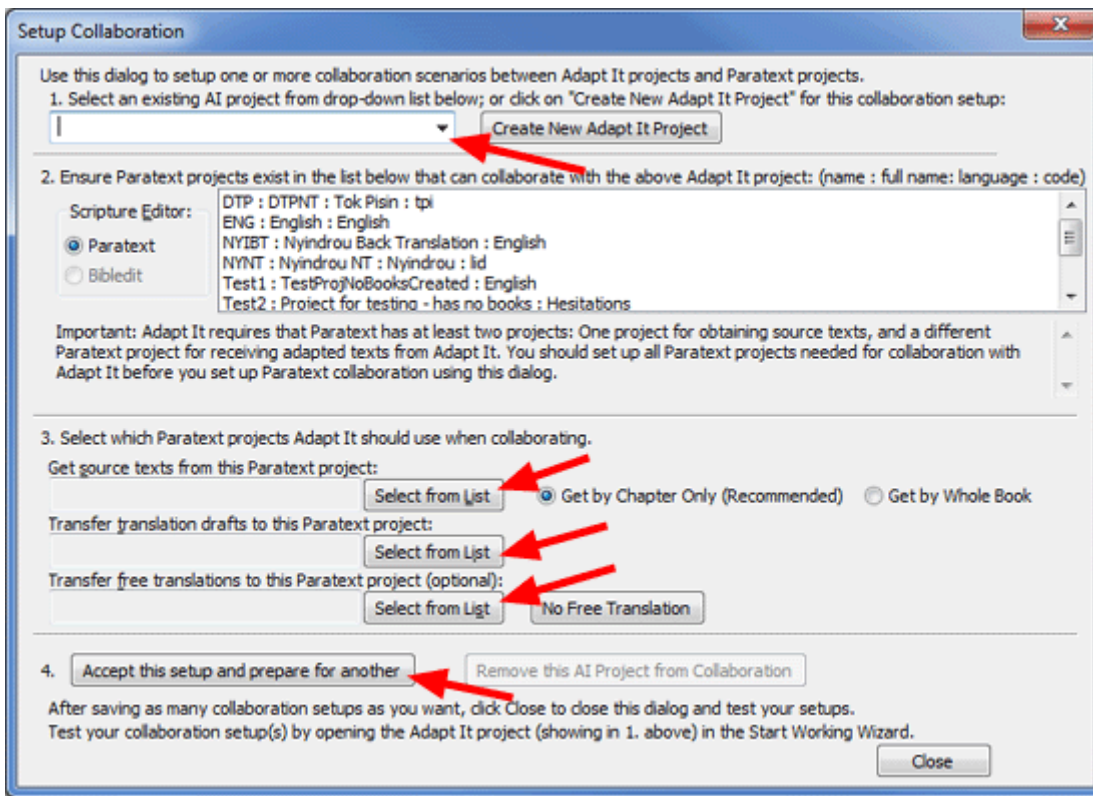
As you create the projects it is important to ensure that the **Language** field is set correctly in Paratext's **Project Properties and Settings** dialog for each Paratext project in the Adapt It collaboration. Press the **Edit/View...** or the **New...** button to enter a unique language name for each project. Paratext provides you with a small set of defined languages and if one of your languages is not in the defined list, you can establish a new one by pressing the **New...** button. Therefore, if the collaboration project has the objective of translating **Swahili** texts to **English**, the "source" project's **Language** field should be set to **Swahili**. In the same way, the "target texts" project's **Language** field should be set to **English**. You may need to establish Swahili as a "new" language; however, English is a Paratext predefined language. Free translation projects may be in the same language as the target project or in a different language for reading by a consultant.

### 3. Setup Adapt It - Paratext Collaboration

The next step is to set up the collaboration in Adapt It. This process takes place using the **Administrator** menu.



When you select "Setup Collaboration..." the following dialog appears:



You should follow the 4 numbered steps as shown on this dialog:

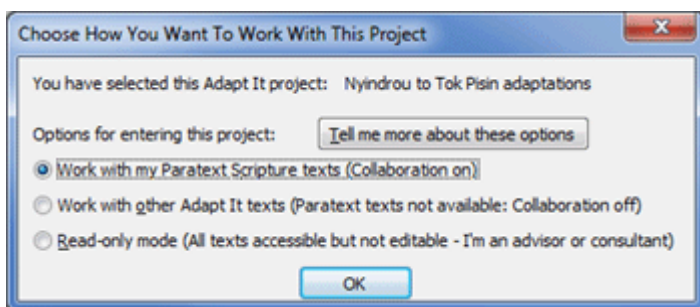
1. Select an existing Adapt It project from the drop-down list that you want to use for collaboration. If the Adapt It project does not yet exist you can click on the "Create New Adapt It Project" button to create an empty Adapt It project for Adapt It to use in the collaboration process. An Adapt It project is needed to keep its adaptation documents during collaboration. If you select an Adapt It project that has previously been configured for collaboration, its collaboration settings will appear in the data fields in Step 3.
2. The choices for Scripture Editor will depend on which programs are installed on your computer, and whether you previously had collaboration working on your computer. If your computer has both Paratext and Biblesit installed both the "Paratext" and "Biblesit" choices will be available, but usually only one choice will be available. **Verify that the Paratext or Biblesit projects have already been created within Paratext or Biblesit.** A minimum of **at least two projects** are required: One project for obtaining source texts for adaptation work in Adapt It; and a different project to receive the adapted texts produced by Adapt It. If the user wants to create a "free translation" in addition to an adaptation, you need to have a third project set up to receive free translations. The Paratext/Biblesit projects need to have ALL of the books that are to be adapted in the overall project. This means that you need to import all available source text books into the Paratext/Biblesit source text project. In the project that is to receive adapted texts, you should **create** the same set of books as in the source project. When creating books in the projects for receiving translated drafts or free translations, they should be created **empty**, but **with chapter and verse numbers** (the default).

Each line in the list displays a single Paratext or Biblesit project. For Paratext, the list lines have up to four parts separated by colon characters (:). The first part is the Paratext "Short Name". The second part is the Paratext "Full Name" for that project. The third part is the "Language" name. The fourth part (if it has been defined within Paratext) is the language code for that project. Biblesit projects have a single part which is generally the same name as the Biblesit project. Important: If you do not see the expected projects, you should STOP at this point in the Adapt It setup. Close the Setup Collaboration dialog (without saving any changes), and go back to Paratext or Biblesit to do the necessary setup. You will not be able to complete the Adapt It setup using this dialog until the necessary Paratext or Biblesit projects exist.

3. Once you have ensured that the necessary projects have been created, you need to **select at least two of those projects using the "Select from List" buttons** shown in step 3. Click on the first "Select from List" button and select the project from which source texts will be obtained during collaboration. Then click on the second "Select from List" button and select a different project which is to receive translation drafts during collaboration. If you have set up a third project to receive free translations, use the third button to select that project. The projects selected will appear in the dialog to the left of the "Select from List" buttons. If you accidentally selected a project for receiving free translations, you can clear that project's selection using the "No Free Translation" button.
4. Click on the "Accept this setup and prepare for another" button to save this collaboration scenario in the Adapt It' project configuration file. Adapt It will verify that the setup configuration has been saved. The data fields of the dialog now become empty in case you want to set up another collaboration projects while working in this dialog. If you have selected an Adapt It project in Step 1 that has previously been configured for collaboration its settings will appear in the data fields of Step 3. If for some reason you want to remove the collaboration settings for the selected Adapt It project, you can do so by clicking the "Remove this AI Project from Collaboration" button.

When have finished configuring collaboration setups, click on the Close button to close the "Setup Collaboration" dialog. The Start Working Wizard will appear. You can now test how the application will work for the user. From the wizard's "Select a Project" page, select a project that you have just configured for collaboration.

You will then see what the user sees when opening that project - a dialog that looks like this:

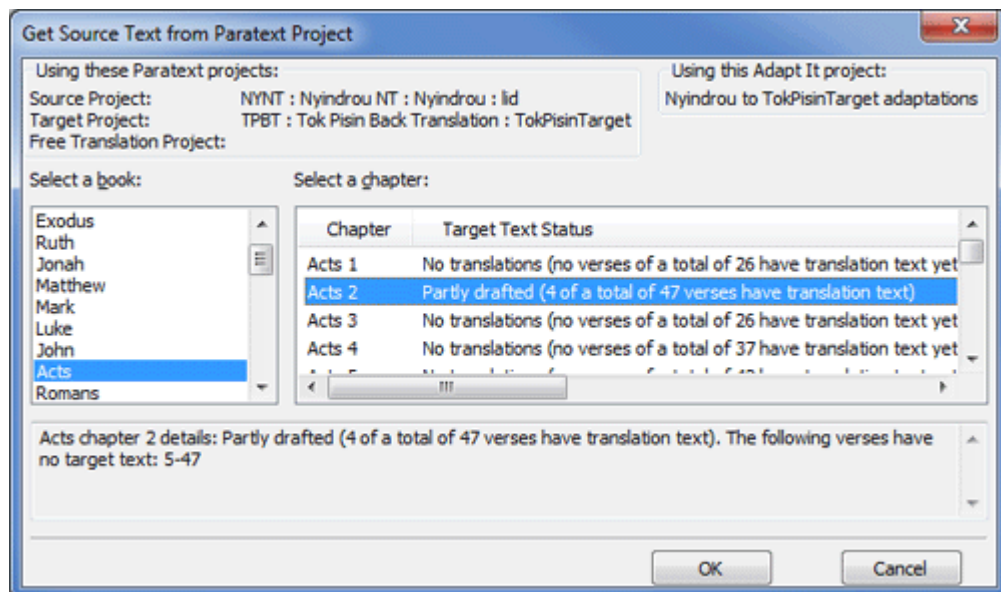


The user has three options for entering a project that you have configured for collaboration. The three options correspond to the three radio buttons in the above dialog. The first two buttons are designed to allow the user to decide whether he wants to work on texts in that project with collaboration on or off. When he elects to "Work with my Paratext Scripture texts (Collaboration on)" and clicks the OK button, the wizard will close and he will see the main book/chapter selection dialog (see below). If he elects to "Work with other Adapt It texts (Paratext texts not available: Collaboration off)" the wizard will continue on to the "Select a Document" page of the wizard, where he can then select any non-collaboration documents that are available for adaptation work. With collaboration turned off the user will work with Adapt It, adapting non-collaboration texts in the same way that Adapt It worked before its collaboration features were added in version 6. Thus, a single Adapt It project may contain documents that are created both when collaboration is on, and when collaboration is turned off. When collaboration is turned on, the user never needs to interact with any documents - he only chooses scripture books and chapters (see below). When collaboration is turned off for the same Adapt It project, the user will see and interact with only non-collaboration documents using the "Select a Document" page of the wizard.

The third option for entering a project is designed for advisors and consultants to use. It is labeled "Read-only mode (All texts accessible but not editable - I'm an advisor or consultant)". When this option is selected, collaboration mode remains off and the "Select a Document" page of the wizard appears. In this case all documents, both collaboration documents (whose names begin with "\_Collab...") and non-collaboration documents will appear in the list of documents, and any of them can be opened. However, with this third option in effect, all documents opened will be in read-only mode. This mode is designed so that an advisor or consultant can view the user's work without risk of making any unintended

changes. When in this mode, the background of the main Adapt It window will be pink as a reminder that read-only mode is in effect and any changes made in that mode cannot be saved, but will be lost when the document is closed.

When the user selects "Work with my Paratext Scripture texts (Collaboration on)", after a short pause the following collaboration dialog will appear:



This is the main dialog that the user will see when collaboration is turned on for the given project. From this simple dialog the user can select a Scripture book and chapter for collaboration. The dialog shows a list of the scripture books available in Paratext's Source Project. It also shows the chapters for the book together with information about the status of the target text as it is currently stored in Paratext's Target Project. The user can select any Paratext book and chapter to work on. When OK is clicked, Adapt It automatically fetches the source text and any existing target text from Paratext and displays them in Adapt It's main window, ready to continue the adaptation process. When work is saved within Adapt It, Adapt It automatically transfers the saved target translation back to the appropriate Paratext project. If a Paratext project is set up for storing free translations, those are also saved in the appropriate Paratext project.

In the past working chapter by chapter in Adapt It and then moving the results to Paratext involved a lot of manual work -- copying and joining chapter files together into whole books and copying them back and forth between Adapt It and Paratext. Not any more! Adapt It knows how to handle the consolidation of books into chapters and how to break books into chapters. All the details and organization of files are processed behind the scenes and invisible to the user. During collaboration work the user never needs to navigate around in the computer's file system and never needs to find or copy or move files.

Note: When Adapt It works in collaboration with Paratext, it not only transfers data between Adapt It and the selected Paratext projects -- it also maintains its own collaboration project in the computer's "Adapt It Unicode Work" folder (or Adapt It Work folder for the non-Unicode version). If the Adapt It project has already been established and work has already been done in the two languages, the collaboration project can take advantage of the previously developed project knowledge base. The collaboration project continues to develop the knowledge base. You should be aware however that you can not continue to work on previously created documents while Adapt It is in collaboration mode. Collaboration mode must be turned off to work in standard Adapt It documents.

[Back to Top](#)

1. Ensure that the necessary versions of Adapt It (6.3.5 or newer) and Bibledit (4.3 or newer) are installed

**IMPORTANT:** If you used Adapt It version 6.0.x or 6.1.x previously, please note that as of version 6.2.1, collaboration with Bibledit can now be setup for individual Adapt It projects, and it is now the user's decision as to whether to turn collaboration on or off for a given Adapt It project. Therefore, if you have previously used version 6.0.x or 6.1.x of Adapt It for collaboration with Bibledit, your collaboration settings will be preserved in upgrading to 6.2.1, but please review the section below carefully for differences in how collaboration is now setup and used.

For Adapt It to collaborate with Bibledit, you need to **install version 6.2.1 or newer of Adapt It and version 4.3 or newer of Bibledit-gtk**. The current version of Adapt It packaged in the SIL repositories can handle collaboration. Getting a new enough version of Bibledit is a little more difficult. The versions packaged in the standard Ubuntu repositories (through Oneric), are not new enough to handle collaboration (typically they have version 4.0 or older). The SIL [packages.sil.org](http://packages.sil.org) repository has a version of Bibledit (4.2.67) for Ubuntu Lucid, Maverick, Natty and Oneiric but that version still does not support collaboration with Adapt It. Until the official Ubuntu repositories get a newer version of Bibledit, the Bibledit team has made newer versions of Bibledit available in the CrossWire repository. Therefore, in order to be able to get Adapt It and Bibledit to collaborate together, you will need to ensure that your Software Sources have the necessary repositories listed in their "Other Software" settings. Do the following steps:

**a.** Start up **Synaptic Package Manager**. It should be located in the System > Administration menu (If it is not there or you are using Unity, which doesn't install it by default, you can find the Synaptic Package Manager by clicking on "Ubuntu Software Center". In the Ubuntu Software Center's Search box type "Synaptic", then click on the "Synaptic Package Manager" item when it appears and click on "Install").

**b.** In the Synaptic Package Manager application click on the **Settings > Repositories**. Click on the **"Other Software"** tab. Examine the list of software repositories. If there is not already a line that contains a reference to **<http://packages.sil.org/ubuntu> ...**, then click on the "Add..." button at the bottom. Then enter **one** of the following lines depending on which distribution of Ubuntu Linux is installed on your machine:

```
deb http://packages.sil.org/ubuntu lucid main
deb http://packages.sil.org/ubuntu maverick main
deb http://packages.sil.org/ubuntu natty main
deb http://packages.sil.org/ubuntu oneiric main
deb http://packages.sil.org/ubuntu precise main
```

**c.** Close the Software Sources, and return to the Synaptic Package Manager, **click on "Reload"** to insure you have the latest information from the repositories. If you get an error, check that you have entered the correct line into your Other Software (step b above).

**d.** Click on the "Search" button and type **adaptit** in the search box. When the adaptit packages appear, look at the "Installed Version" and "Latest Version" columns. Ensure that the version listed for adaptit is **at least 6.2.1, but preferably 6.5.3 or later**. If the "Latest Version" (if no version of adaptit is at least 6.2.1 make sure you have set up the <http://packages.sil.org/ubuntu> line correctly in the Synaptic Package Manager's Software Sources setup in step b above). If no version is listed in the "Installed Version", or if the "Latest Version" is newer than the "Installed Version" listed you should mark the adaptit entries for installation or upgrade. To mark the adaptit and adaptit-docs packages, right click on them and select "Mark for Installation" or "Mark for Upgrade" from the popup menu. Select the "Mark" button in the warning dialog. Then click on the "Apply" button at the top of the Synaptic Package Manager application, and click on the "Apply" button on the Summary dialog. Close Synaptic Package Manager after it completes the installation of Adapt It.

**e.** In the Synaptic Package Manager application click on the **Settings > Repositories**. Click on the **"Other Software"** tab. Examine the list of software repositories. If there is not already a line that contains

a reference to <http://ppa.launchpad.net/pkgcrosswire/ppa/ubuntu> ..., then click on the "Add..." button at the bottom. Then enter **one** of the following lines depending on which distribution of Ubuntu Linux is installed on your machine:

```
deb http://ppa.launchpad.net/pkgcrosswire/ppa/ubuntu lucid main
deb http://ppa.launchpad.net/pkgcrosswire/ppa/ubuntu maverick main
deb http://ppa.launchpad.net/pkgcrosswire/ppa/ubuntu natty main
deb http://ppa.launchpad.net/pkgcrosswire/ppa/ubuntu oneiric main
deb http://ppa.launchpad.net/pkgcrosswire/ppa/ubuntu precise main
```

**f.** Close the Software Sources, and return to the Synaptic Package Manager, **click on "Reload"** to insure you have the latest information from the repositories. If you get an error, check that you have entered the correct line into your Other Software (step e above).

**g.** Click on the "Search" button and type **bibledit-gtk** in the search box. When the bibledit-gtk and bibledit-gtk-data packages appear, look at the "Installed Version" and "Latest Version" columns. Ensure that the version listed for bibledit is **at least 4.3**. If no version is listed in the "Installed Version", or if the "Latest Version" is newer than the "Installed Version" listed you should mark the bibledit-gtk and bibledit-gtk-data entries for installation or upgrade. To mark the bibledit-gtk and bibledit-gtk-data packages, right click on them and select "Mark for Installation" or "Mark for Upgrade" from the popup menu. Select the "Mark" button in the warning dialog. Then click on the "Apply" button at the top of the Synaptic Package Manager application, and click on the "Apply" button on the Summary dialog. Close Synaptic Package Manager after it completes the installation of bibledit-gtk.

**Troubleshooting:** if the only version of bibledit-gtk listed is lower than 4.3, take the following steps:

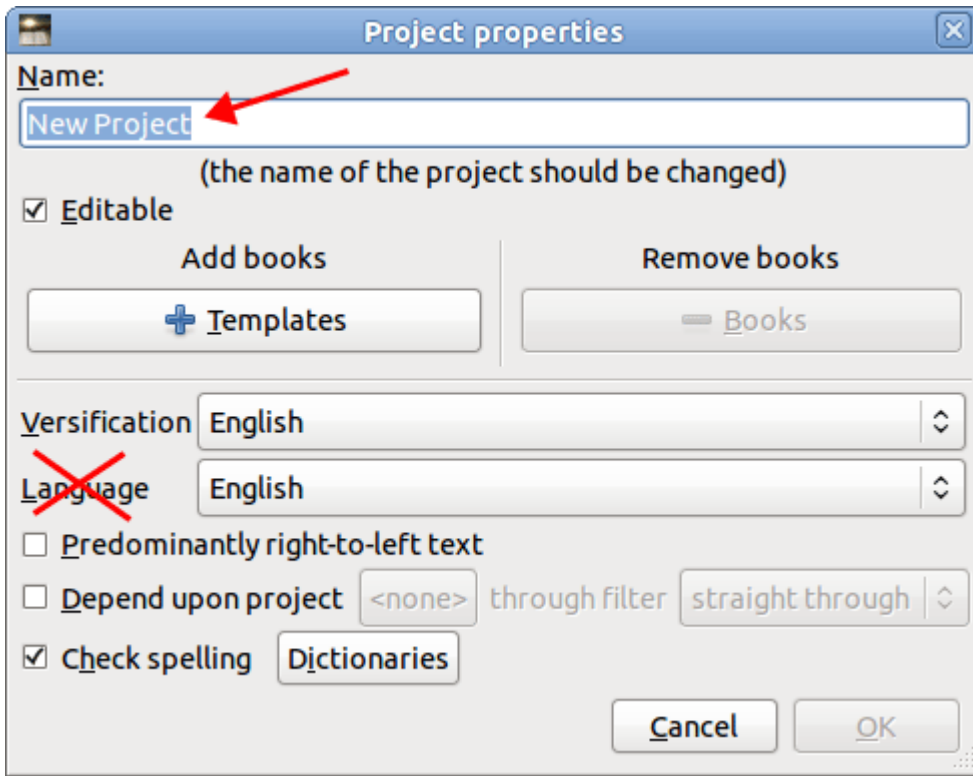
- In the Synaptic Package Manager application click on the **Settings > Repositories**.
- Click on the '**Other Software**' tab.
- Uncheck any repository containing <http://packages.sil.org>.
- Repeat steps f and g above.

After their installation, both Adapt It and Bibledit-Gtk should be listed in the Office menu (or can be found by searching for adaptit or bibledit on Unity's Desk Home search bar). The next step is to ensure that you have your Bibledit projects (at least two) setup within Bibledit.

2. Prepare at least two Bibledit projects for collaboration with Adapt It

**BEFORE** you set up Adapt It to collaborate with Bibledit, you should ensure that Bibledit has at least **TWO** projects set up - one project for obtaining **source** texts, and a different project to receive the **translation drafts** produced by Adapt It. You may also want to have a third project set up within Bibledit for storing **Free translations** . These projects should be set up, complete with books either imported or created within Bibledit **BEFORE** you set up Adapt It to collaborate with Bibledit. Select File > Project > New to access Bibledit's "Project properties" dialog. It looks like this:

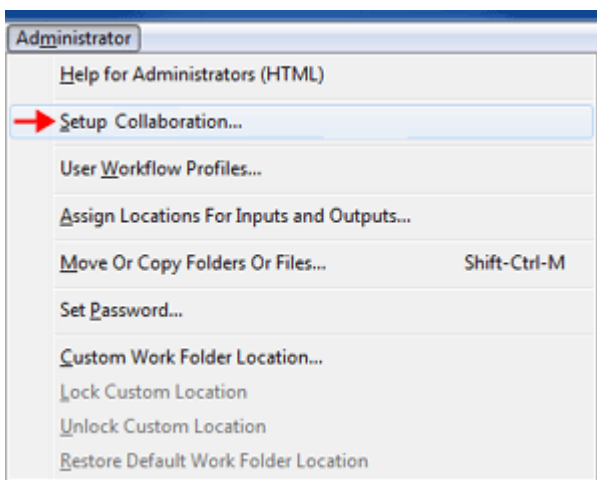




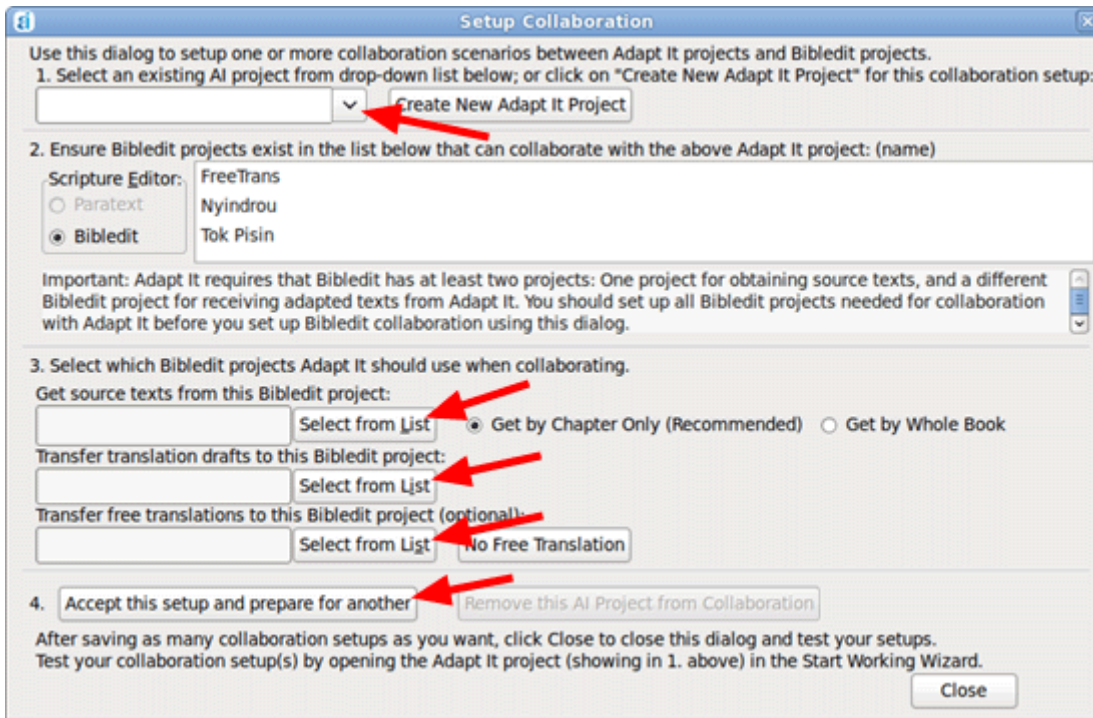
Note: You can ignore the Language setting field shown above during the setup for collaboration. If you know how to set up a customized Bibledit language name you can do so; but because of the difficulty for most users, Adapt It does not make use of the "Language" setting here in the Bibledit Project's properties dialog. Instead Adapt It will allow you to define the language names it will use for the Bibledit projects participating in the collaboration process (see below).

Important: As an administrator you should have a long term goal in mind when creating the Bibledit projects and the books for those projects. You should **import** into the Bibledit project used for source texts ALL books that may eventually be adapted using Adapt It. In the Bibledit project that is to receive adapted texts, you should **create** ALL the books that may ever be translated now at the beginning of the project. When creating books in the Bibledit projects for receiving translated drafts or free translations, they should be created empty, but **with chapter and verse numbers** (the Bibledit default). To do this, after you add a book, use the "+ Templates" button to get the book's chapters setup with USFM markers without any text content.

### 3. Set Up Adapt It - Bibledit Collaboration



When you select "Setup Collaboration..." the following dialog appears:



You should follow the 4 numbered steps as shown on this dialog:

1. Select an existing Adapt It project from the drop-down list that you want to use for collaboration. If the Adapt It project does not yet exist you can click on the "Create New Adapt It Project" to create an empty Adapt It project for Adapt It to use in the collaboration process. An Adapt It project is needed to keep its adaptation documents during collaboration. If you select an Adapt It project that has previously been configured for collaboration, its collaboration settings will appear in the data fields in Step 3.
2. The choices for Scripture Editor will depend on which programs are installed on your computer, and whether you previously had collaboration working on your computer. If your computer has both Paratext and Bibledit installed both the "Paratext" and "Bibledit" choices will be available, but usually only one choice will be available. **Verify that the Bibledit or Bibledit projects have already been created within Bibledit or Paratext.** A minimum of **at least two projects** are required: One project for obtaining source texts for adaptation work in Adapt It; and a different project to receive the adapted texts produced by Adapt It. If the user will be creating a free translation in addition to an adaptation, you need to have a third project set up to receive free translations.

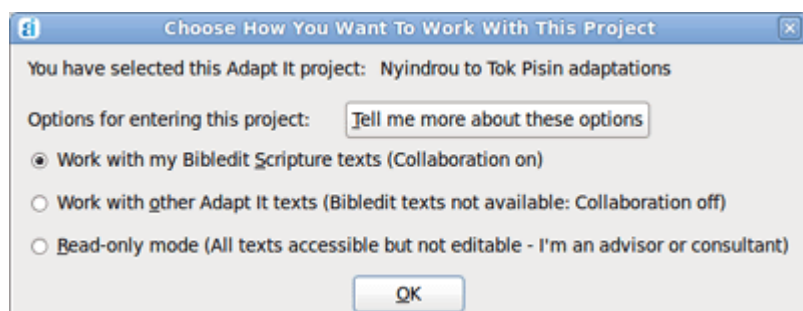
The Paratext/Bibledit projects need to have ALL of the books that are to be adapted in the overall project. This means that you need to import all available source text books into the Paratext/Bibledit source text project. In the project that is to receive adapted texts, you should **create** the same set of books as in the source project. When creating books in the projects for receiving translated drafts or free translations, they should be created **empty** , but **with chapter and verse numbers** (the default).

Each line in the list displays a single Paratext or Bibledit project. For Paratext, the list lines have up to four parts separated by colon characters (:). The first part is the Paratext "Short Name". The second part is the Paratext "Full Name" for that project. The third part is the "Language" name. The fourth part (if it has been defined within Paratext) is the language code for that project. Bibledit projects have a single part which is generally the same name as the Bibledit project. Important: If you do not see the projects listed that your user will need to use in collaboration, you should STOP at this point in the Adapt It setup. Cancel from the Setup Collaboration dialog and do the necessary setup of the Paratext or Bibledit projects first. You will not be able to complete the Adapt It setup using this dialog until the necessary Paratext or Bibledit projects already exist.

3. Once you have ensured that the necessary projects have been created, you need to **select at least two of those projects using the "Select from List" buttons** shown in step 3. Click on the first "Select from List" button and select the project from which source texts will be obtained during collaboration. Then click on the second "Select from List" button and select a different project which is to receive translation drafts during collaboration. If you have set up a third project to receive free translations, use the third button to select that project. The projects selected will appear in the dialog to the left of the "Select from List" buttons. If you accidentally selected a project for receiving free translations, you can clear that project's selection using the "No Free Translation" button.
4. Click on the "Accept this setup and prepare for another" button to save this collaboration scenario in the Adapt It' project configuration file. Adapt It will verify that the setup configuration has been saved. The data fields of the dialog now become empty in case you want to set up another collaboration projects while working in this dialog. If you have selected an Adapt It project in Step 1 that has previously been configured for collaboration its settings will appear in the data fields of Step 3. If for some reason you want to remove the collaboration settings for the selected Adapt It project, you can do so by clicking the "Remove this AI Project from Collaboration" button.

When have finished configuring collaboration setups, click on the Close button to close the "Setup Collaboration" dialog. The Start Working Wizard will appear. You can now test how the application will work for the user. From the wizard's "Select a Project" page, select a project that you have just configured for collaboration.

You will then see what the user sees when opening that project - a dialog that looks like this:

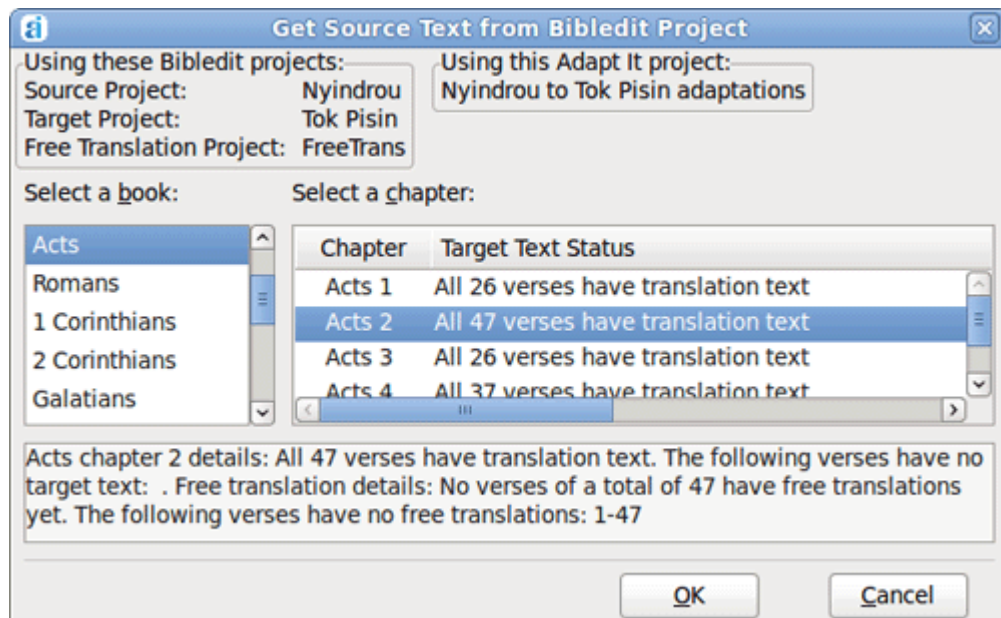


The user has three options for entering a project that you have configured for collaboration. The three options correspond to the three radio buttons in the above dialog. The first two buttons are designed to allow the user to decide whether he wants to work on texts in that project with collaboration on or off. When he elects to "Work with my Biblescripture texts (Collaboration on)" and clicks the OK button, the wizard will close and he will see the main book/chapter selection dialog (see below). If he elects to "Work with other Adapt It texts (Biblescripture texts not available: Collaboration off)" the wizard will continue on to the "Select a Document" page of the wizard, where he can then select any non-collaboration documents that are available for adaptation work. With collaboration turned off the user will work with Adapt It, adapting non-collaboration texts in the same way that Adapt It worked before its collaboration features were added in version 6. Thus, a single Adapt It project may contain documents that are created both when collaboration is on, and when collaboration is turned off. When collaboration is turned on, the user never needs to interact with any documents - he only chooses scripture books and chapters (see below). When collaboration is turned off for the same Adapt It project, the user will see and interact with only non-collaboration documents using the "Select a Document" page of the wizard.

The third option for entering a project is designed for advisors and consultants to use. It is labeled "Read-only mode (All texts accessible but not editable - I'm an advisor or consultant)". When this option is selected, collaboration mode remains off and the "Select a Document" page of the wizard appears. In this case all documents, both collaboration documents (whose names begin with "\_Collab...") and non-collaboration documents will appear in the list of documents, and any of them can be opened.

However, with this third option in effect, all documents opened will be in read-only mode. This mode is designed so that an advisor or consultant can view the user's work without risk of making any unintended changes. When in this mode, the background of the main Adapt It window will be pink as a reminder that read-only mode is in effect and any changes made in that mode cannot be saved, but will be lost when the document is closed.

When the user selects "Work with my Bibledit Scripture texts (Collaboration on)", after a short pause the following collaboration dialog will appear:



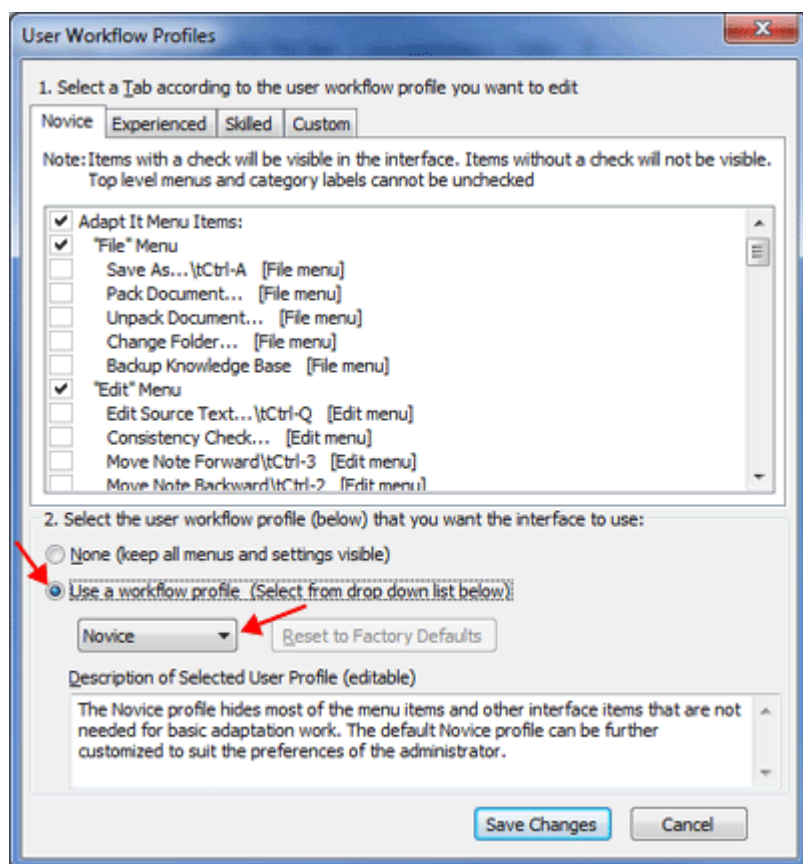
This is the main dialog that the user will see when collaboration is turned on for the given project. From this simple dialog the user can select a Scripture book and chapter for collaboration. The dialog shows a list of the scripture books available in Bibledit's Source Project. It also shows the chapters for the book together with information about the status of the target text as it is currently stored in Bibledit's Target Project. The user can select any Bibledit book and chapter to work on. When OK is clicked, Adapt It automatically fetches the source text and any existing target text from Bibledit and displays them in Adapt It's main window, ready to continue the adaptation process. When work is saved within Adapt It, Adapt It automatically transfers the saved target translation back to the appropriate Bibledit project. If a Bibledit project is set up for storing free translations, those are also saved in the appropriate Bibledit project.

In the past working chapter by chapter in Adapt It and then moving the results to Bibledit involved a lot of manual work -- copying and joining chapter files together into whole books and copying them back and forth between Adapt It and Bibledit. Not any more! Adapt It knows how to handle the consolidation of books into chapters and how to break books into chapters. All the details and organization of files are processed behind the scenes and invisible to the user. During collaboration work the user never needs to navigate around in the computer's file system and never needs to find or copy or move files.

Note: When Adapt It works in collaboration with Bibledit, it not only transfers data between Adapt It and the selected Bibledit projects -- it also maintains its own collaboration project in the computer's "Adapt It Unicode Work" folder (or Adapt It Work folder for the non-Unicode version). If the Adapt It project has already been established and work has already been done in the two languages, the collaboration project can take advantage of the previously developed project knowledge base. The collaboration project continues to develop the knowledge base. You should be aware however that you can not continue to work on previously created documents while Adapt It is in collaboration mode. Collaboration mode must be turned off to work in standard Adapt It documents.

## Set up a User Workflow Profile

Adapt It has many menu items and features to choose from. Such choices may be bewildering to a new user or inexperienced user. Adapt It now allows an administrator to control which choices appear in the program's interface, and which others remain hidden until such time as they may be needed. To activate a user workflow profile, [make the Administrator menu visible](#), then select User Workflow Profiles... menu item. The following dialog appears:



This dialog organizes Adapt It's menu selections, Preferences tabs, Mode bar items, and Tool bar items into four lists or "profiles" that correspond to the four tabs at the top of the dialog. Those tabs or profiles are labeled "Novice", "Experienced", "Skilled" and "Custom." The list in each tab all contain the same list of items, but we've pre-selected certain items on each list that we think should be visible for that profile, and un-selected those items that we think would be good to remain hidden for the given profile. The Novice profile starts with most of the listed items hidden (un-ticked). The Experienced profile makes a few more items visible in the interface (by ticking more items). The Skilled profile makes many more interface items visible (by ticking even more items).

Our suggestions are only a starting point; each profile can be further customized by you, the administrator, to your liking and according to your knowledge of the skills and needs of the user. If you select the fourth tab labeled "Custom" Adapt It will ask you if you want to initialize the selections from one of the other three profiles as a starting point -- from which you may continue to customize which interface items are to be shown (ticked), and which should be hidden (un-ticked).

The default profile setting is "**None** (keep all menus and settings visible)". If you want to use a workflow profile, you first need to click the radio button labeled, "**Use a workflow profile** (select from drop down list below)". This selection enables the drop down box located below it. Only one profile can be selected at a given time for the user. You can select the desired profile by using the drop down box which will allow you to select the Novice, Experienced, Skilled or the Custom profile. Then, to make the interface start using a selected profile click on the "Save Changes" button.

At any time you can come back to the User Workflow Profiles dialog and switch to a different profile or adjust the individual items that should be visible or hidden for a given profile, and save the changes.

If you modified the items in a given profile, and now want to revert that profile to its "factory defaults" you can do so by first selecting that profile in the drop down box, and then clicking on the "Revert to factory defaults" button. If the "Revert to factory defaults" button is disabled, it means that you have not changed the viewing status of any individual item in that profile's list.

To stop using a user profile, simply click on the "**None** (keep all menu and settings visible)" radio button. Adapt It will remember your settings in case you later decide to reactivate a workflow profile that you set up previously. As an administrator you might want to temporarily turn OFF the current user profile, in order to be able to access all of the interface items while examining the user's computer. This can now be done via the "Turn OFF the current user profile temporarily" menu item located in the same group as the User Workflow Profiles... menu item on the Administrator menu.

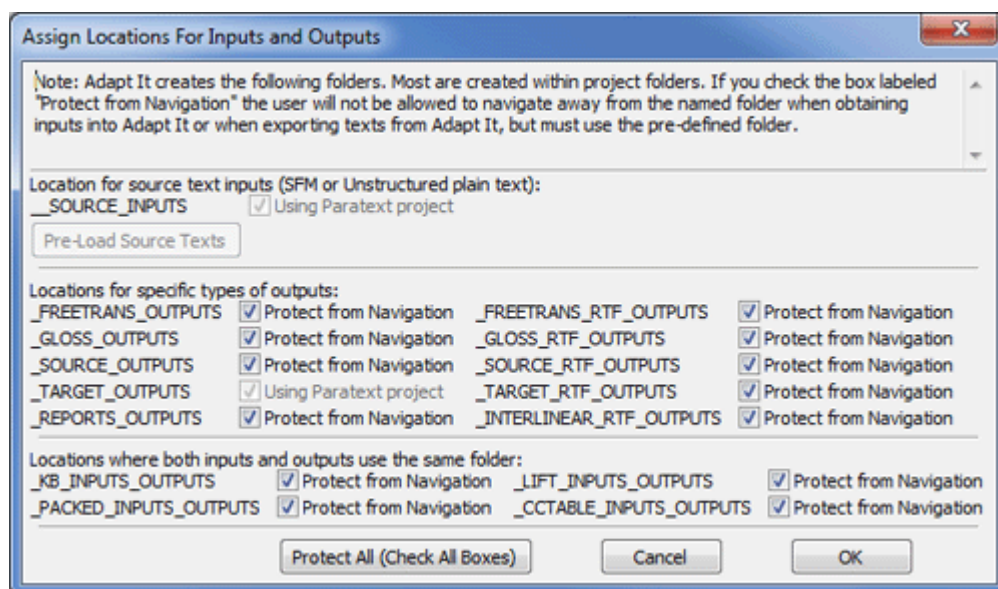
[Back to Top](#)

### Pre-Assign locations for the various kinds of inputs and outputs

Some computer users find it difficult or confusing to navigate through a hierarchical file system. They often are not sure where the files are located that they need to open, or where to save or export files from Adapt It. They may get lost navigating around the file system inside a file browser. They may not really know what a file would be called that they are looking for, nor what a file should be called when saving or exporting data from Adapt It. Adapt It 6 now allows you the administrator to pre-assign locations for any and all the kinds of inputs and outputs that can be done by a user. We call this a way to "protect" a user from having to do any navigation of the file system in order to get his work done.

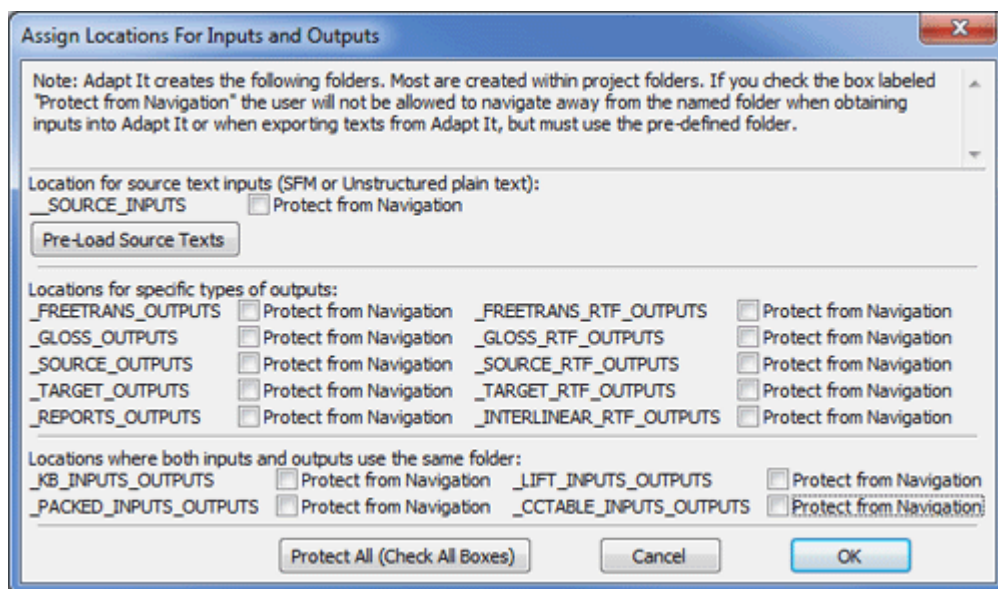
Adapt It now allows you the administrator, to pre-assign locations for Adapt It's inputs and outputs, and therefore protect the user from having to compose file names and from having to navigate the file system to find or save files. To activate these protections, [make the Administrator menu visible](#), then select the **Assign Locations for Inputs and Outputs...** menu item.

The main dialog appears, which looks like this:



By default none of the "Protect from Navigation" check boxes are ticked. Each of the names in upper case letters and starting with one or two initial \_ underscore characters, are the names of a standard set of folders that Adapt It 6 automatically creates on the user's computer. These folder locations become the default location for the types of data described by the folder's names. If you as administrator, wish to "protect" that type of data, you can simply put a tick by as many folder locations as you want. If you want to protect all the types of data that Adapt It uses or exports, simply click on the "Protect All (Check All Boxes)" button.

A setup for a fully protected user (with Paratext collaboration turned ON) would look like this:



Note: When Adapt It is working in collaboration with Paratext or Bibledit, Adapt It automatically limits the location for the source text inputs it obtains for adaptation work, and it also limits the locations where translation drafts are exported -- to the Paratext or Bibledit projects that are assigned during collaboration. Therefore, if you have previously set up Adapt It to collaborate with Paratext or Bibledit, the "Protect from Navigation" check boxes to the right of `_SOURCE_INPUTS` and `_TARGET_OUTPUTS` will indicate (as shown in the dialog immediately above) that they are "Using Paratext project"; they will be automatically ticked and cannot be changed.

Again, please understand that if Adapt It is collaborating with Paratext or Bibledit, SOURCE texts can only be obtained from the Paratext or Bibledit projects, and Adapt It's TARGET texts (adapted translation drafts) are automatically transferred back to Paratext or Bibledit projects.

However, if your user will **not** be collaborating with Paratext or Bibledit, you should consider at least selecting the "Protect from Navigation" for the **SOURCE\_INPUTS** folder. **When this folder is "protected" the user will only see and be able to select from a list of input texts for adaptation that are located in the SOURCE\_INPUTS folder.** This can be a very helpful way to guide the user in what texts to use for adaptation. **Since the user cannot obtain source text from anywhere else it is important that you, the advisor, pre-load the SOURCE\_INPUTS folder with the input texts that the user will need for his or her adaptation work. A convenient way to pre-load the SOURCE\_INPUTS folder, it to use the "Move or Copy Files Or Folders" dialog from the Administrator menu.** This dialog is designed like a "smart" file browser and knows what kind of files can be used for adaptation work.

When a folder location has "Protect from Navigation" activated, Adapt It will not ask the user for a file name nor allow the user to navigate to a different folder, but will automatically assign a file name to the input or output file, and read it from or store it to the indicated location.

The following information is a technical explanation of the way Adapt It handles the file naming process. You can safely ignore this section unless you are interested in the details or in the unlikely circumstance that the file processing does not work properly. In this case, the following information can be of value in finding out what went wrong and for conveying to the Adapt It what has happened to the computer.

When navigation protection is activated for a given input/output type, Adapt It automatically assigns names to files, it composes the name based on the type of the file's contents and adds a date-time "stamp" at the end of the name, and affixes the appropriate extension. This results in some long file names, but that is of no concern to the user, because when "Protect from Navigation" is activated the user doesn't have to interact with files or file names anyway. For example, the automatically composed name for an RTF export of the target text might look something like this:

## **\_Target\_Text\_45\_ACT\_CH02\_exported\_2011\_07\_11T14\_25\_53Z.rtf**

and it would be located in the **\_TARGET\_RTF\_OUTPUTS** folder of the Adapt It project. Because of the presence of the date-time stamp within the file name, there is never going to be a danger of files overwriting one another because all exported files will have unique, easily discernable names, and files with similar content will sort together in chronological order.

Note: The assignment of text type prefixes and/or date-time stamp suffixes on file names is not automatically done when navigation protection is OFF for a given input/output type, but it text type prefixes and date-time stamp suffixes can be used if desired at import/export time by ticking the appropriate check boxes on the dialog that appears.

We suggest that you use the Assign Locations For Inputs and Outputs dialog to help keep your user's data organized into predictable locations and its files consistently named - so that they are easily identified as to content and creation date.

When Adapt It is setup for collaboration with Paratext or Bibledit, Adapt It keeps a copy of each chapter or book file that it obtains from Paratext/Bibledit - placing the copy in the **SOURCE\_INPUTS** folder of the Adapt It project that is hooked up to Paratext/Bibledit during collaboration. The files that Adapt It puts in the SOURCE\_INPUTS folder are named automatically by Adapt It, and will have a **\_Collab\_** prefix on the name. A chapter file for chapter 2 of the book of Matthew obtained from Paratext or Bibledit will be named similar to the following example:

### **\_Collab\_41\_MAT\_CH02.txt**

If collaboration is done by whole book, a file obtained from Paratext or Bibledit will be named similar to the following example:

### **\_Collab\_41\_MAT.txt**

The adaptation documents that Adapt It creates - regardless of whether collaboration is ON or OFF, are still stored in the "**Adaptations**" folder of the Adapt It project. When collaboration is turned ON, those files are automatically named by Adapt It. The adaptation document for Matthew chapter 2 would be called:

### **\_Collab\_41\_MAT\_CH02.xml**

and the adaptation document for the whole book of Matthew would be called:

### **\_Collab\_41\_MAT.xml**

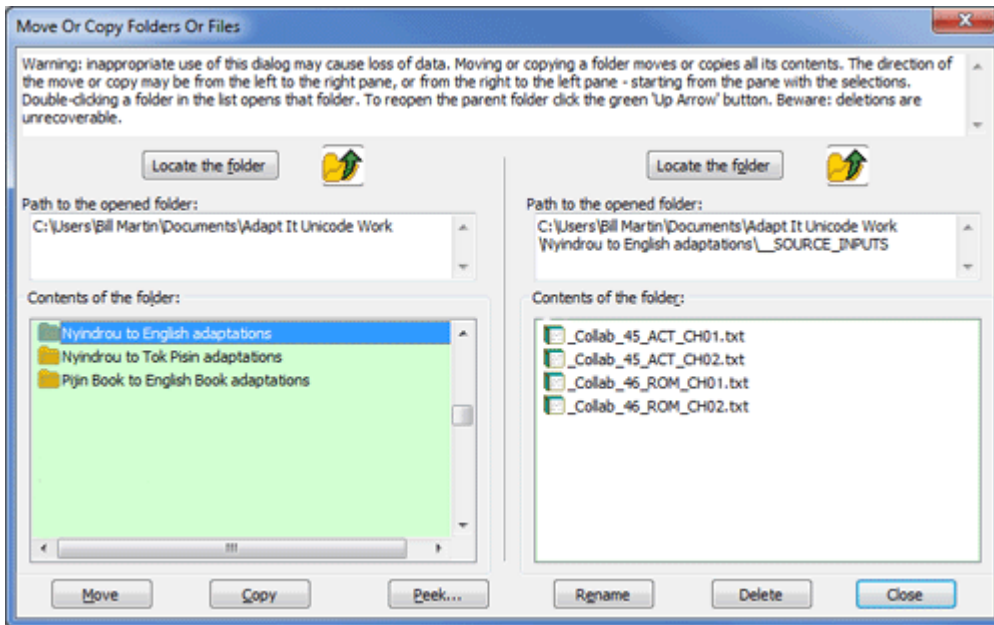
in either case these xml formatted adaptation documents are always located in the **Adaptations** folder of the Adapt It project.

[Back to Top](#)

Moving or copying files or folders.

As an administrator you may have a need to move or copy files from within Adapt It. Adapt It 6 provides an "intelligent" file browser for administrative use. To get Adapt It's file browser, [make the Administrator menu visible](#), then select the "Move Or Copy Folders Or Files..." menu item. When you do so the following dual pane dialog appears:





Note that generally, if your users are going to be working with Adapt It in collaboration with Paratext or Bibledit, you probably do not need to worry about moving or copying files or folders for Adapt It's use. In collaboration work the main data you will be concerned about will be the data kept in the Paratext or Bibledit data store. In collaboration mode Adapt It becomes an adaptation engine for Paratext or Bibledit, and the scripture data essentially stays within the Paratext or Bibledit projects. Adapt It automatically makes copies of the data and creates its own project for the purposes of adaptation, and Adapt It automatically transfers its target texts (translation drafts) back to Paratext or Bibledit. Hence, all data is destined to start and end within the designated Paratext/Bibledit projects.

The above "intelligent" file browser can be helpful if you do not plan to work with Adapt It in collaboration with Paratext or Bibledit. In such cases, you can use this dialog to copy potential source texts into an Adapt It project's `__SOURCE_INPUTS` folder.

[Back to Top](#)

### Setting up an administrator password

To access the Administrator menu you first need to make the Administrator menu visible. From within Adapt It click on the "Show Administrator Menu..." item on the View menu. For the password, you can always enter the default password which is the word admin. You can also set your own password using the Administrator menu item for that purpose. The administrator password is not a highly guarded secret, but exists only to hinder inexperienced users from accessing the administrator menu and changing settings they should not be changing. If you set your own password it will be kept unencrypted in the basic configuration file `AI-BasicConfiguration.aic` located in the Adapt It Unicode Work folder (or Adapt It Work folder for the non-Unicode application). If you forget your password, you can find it in the `AI-BasicConfiguration.aic` file, or you can simply use the default password mentioned above.

### Set up a custom work folder (Optional)

For most users you should just allow Adapt It to create and maintain its default "Adapt It Unicode Work" folder (or "Adapt It Work" for the non-Unicode version) in the default location. For Windows systems, Adapt It will by default create this folder in the user's "Documents" (or "My Documents") folder. For Linux systems this work folder will be created in the `/home/` folder. On Mac systems this folder will be created in the `/Users/` folder.

In some cases you may want Adapt It to use a custom work folder in a non-default location -- such as on a different disk partition, or in a different folder than the default location. You can use the Administrator menu's "Custom Work Folder..." item to assign the location where Adapt It will establish its work folder. When you select "Custom Work Folder", Adapt It displays a standard dialog in which you can navigate to

the location where you want Adapt It to establish its work folder.

Adapt It will remember any custom work folder location that you specify -- until such time as you, the administrator specify a different location or choose "Restore Default Work Folder Location" from the Administrator menu. If you establish a custom work folder location Adapt It will offer to lock it in that location. If you choose not to lock it in that location, Adapt It will only continue using that location for the current work session.

You need to be aware that if you create a custom work folder and then change back to the default work folder, none of the work done in the custom folder transfers to the default folder. The same is true in the other direction. You as the administrator are responsible to make those file transfers if they are needed. For this reason, the Adapt It team recommends that custom work folders are used rarely and if you choose to do so, you use them consistently instead of the default folders.

[Back to Top](#)

## Guidelines for training Adapt It users

### Preparations for Collaboration Work (with Paratext or Biblesedit)

\* **Prepare the Paratext/Biblesedit projects.** You as Administrator should prepare the Paratext/Biblesedit projects **BEFORE** setting up Adapt It collaboration. You should make sure that [Paratext](#) or [Biblesedit](#) has **at least TWO projects** :

1. A project that contains the source language texts from which Adapt It will obtain its source texts for adaptation work. Preferably this Paratext/Biblesedit project should contain all the available source texts that will be used in collaboration.
2. You also should make sure that Paratext or Biblesedit has a **different** project created which will receive the adapted translation drafts produced by Adapt It.

If your user will be preparing free translations, you should also create a third project in Paratext/Biblesedit to receive free translations. The books you create in the Paratext/Biblesedit projects for receiving the target text and free translations can be empty but they should be created with (empty) chapter and verse numbers. Ensure that the (empty) books created correspond to the books that exist in the source language project.

\* **Setup Paratext/Biblesedit Collaboration.** You as Administrator should setup collaboration using the "Setup Paratext/Biblesedit Collaboration..." menu item on the Adapt It Administrator menu. Using that Adapt It dialog, designate the Paratext/Biblesedit projects that are to be used for a given Adapt It project. You can set configure different collaboration settings for different Adapt It projects. This ensures that the user will not have to do any setup, but can simply start working by selecting the Adapt It project to enter, choosing whether to turn collaboration on or off, and if collaboration is on, choosing the book and chapter to work on. After configuring Adapt It projects for collaboration, you should ensure that things are working correctly by doing what the user would do: select an Adapt It project from the opening page of the Start Working wizard, choosing to turn collaboration on (or off) for that project, and if collaboration is turned on, selecting a scripture book and a chapter from the "Get Source Text from Paratext/Biblesedit Project dialog". If you get any errors, see the [Trouble Shooting](#) topic.

\* **Setup a user workflow profile.** You as Administrator should carefully consider the skill and experience of the user, and determine if one of Adapt It's pre-configured [user workflow profiles](#) would be appropriate for a given user. You can establish a user profile using the Administrator menu's "User Workflow Profiles..." menu item. The **Novice** user profile hides most menu items and options that are not absolutely necessary for basic adaptation work. The **Experienced** and **Skilled** profiles enable more menu items and interface options. You can also customize any of the profiles or design your own profile using the **Custom** user profile. If you decide to use a profile, you should practice using Adapt It yourself with that profile in force, or at least closely watch the user working with that user profile in effect, to make

sure that the options that remain visible are suitable for the skills and the work expected of that user. You don't want to hide options that a user really will need to do his job.

\* **Assign Locations for Inputs and Outputs.** During collaboration with Paratext or Bibledit, Adapt It automatically limits the locations for source text inputs and target text outputs to the Paratext or Bibledit project being used in collaboration. But, Adapt It is able to do other kinds of inputs and exports. You as Administrator, should decide whether your user should be "protected" from the possibility of getting inputs from the wrong place, and exporting outputs to the wrong place. Without such protection files can get lost or misplaced. We suggest that you select all of the "Protect from Navigation" check boxes in the "[Assign Locations for Inputs and Outputs](#)" dialog. When the "Protect from Navigation" check box is ticked, Adapt It will automatically name and locate files for that particular type of input or output, placing the files within Adapt It's special folders.

\* **Check the settings in Adapt It's Preferences dialog.** The Preferences dialog is accessible from the **Edit** menu with a document loaded for collaboration. You as Administrator should ensure that Adapt It is using the correct **Fonts, Punctuation,** and any **Case equivalences** for the languages involved in the collaboration work. Use the tabs in the Preferences dialog to make any needed changes.

Training points for Collaboration Work (with Paratext or Bibledit)

Once you have done the necessary preparations as described in the "Preparations for Collaboration Work" section above, you should provide some supervised training in the use of Adapt It. Your training should include the following:

\* **Supervised "hands-on" adaptation work with the actual texts of the collaboration project.** There is a document supplied with Adapt It installations called "Adapt It Tutorial.doc". Chapter 1 of that Tutorial contains information that is focused on situations where Adapt It is set up to work with texts apart from collaboration scenarios. It covers information that you as administrator might find helpful, but the user will not need to understand to work in collaboration with Paratext or Bibledit. However, chapter 2 of the Adapt It Tutorial.doc is called "Working on a document", and contains good information and exercises. You will want to adapt the information and procedures demonstrated there to your actual collaboration texts. Hence, you should help the user practice using actual texts in the collaboration project until s/he feels comfortable working with Adapt It. The knowledge and adaptation skills that treated in the tutorial and that are important for the user to develop are:

1. Understanding the parts of Adapt It's main window (menus, toolbar, modebar, layout of strips, piles).
2. Positioning the phrase box, typing text into it, pressing Enter to advance it.
3. Merging source words to make a source phrase.
4. Unmerging a source phrase.
5. Accepting a default adaptation without changes.
6. Retranslating a section of source text; removing or editing a retranslation.
7. Inserting an extra word or phrase; removing inserted words or phrases.
8. Reading your translation without the source text being shown.
9. Single-step mode versus Automatic mode.
10. When there are multiple translations - the Choose Translation dialog.
11. Leaving a source word untranslated - three kinds of "nothing".

There is also a more comprehensive "Adapt It Reference.doc" document which you may find helpful.

\* **Getting texts by "Chapter Only"** is the default method of exchanging texts with Paratext or Bibledit. You as administrator can select to "Get Chapter Only" or "Get Whole Book" within your "Setup Paratext/Bibledit Collaboration" dialog accessible from the Administrator menu. However, we recommend that you leave the default set as "Get Chapter Only". Single chapter chunks load and save more quickly than whole books such as the Gospels and Acts. Since Adapt It organizes everything and automatically does all transfers between Adapt It and Paratext or Bibledit, there is no logistical problem for the user to work chapter by chapter. Even when working chapter by chapter, Adapt It automatically transfers the

chapter's translation work back into the whole books when Adapt It saves the translation work. In any case, you should not change between collaborating by Chapter Only and Whole Book for a given book. If adapting chapter-by-chapter, the user should continue working chapter-by-chapter until the whole book is finished.

\* **Reporting Problems and Giving Feedback.** Adapt It is provided free of charge under an open source license. The developers are quick to respond to email reports of problems and requests. They depend on the reports of any problems as well as feedback from field users to improve Adapt It. Before reporting problems to the developers, please have a look at the [Trouble Shooting](#) topic below. If that does not help you resolve the problem, feel free to contact the developers either via email or via the "Report a Problem..." selection in Adapt It's help menu (see below).

Adapt It version 6 now has an easy to use email reporting feature - located on the Adapt It Help menu. Just click on the Help menu item labeled "**Report a Problem...**" and Adapt It will display the following dialog - with much of the information already filled in:

Report a problem

Email Heading Information:

TO: (Adapt It Developers) developers@adapt-it.org (bruce\_waters@sil.org,bill\_martin@sil.org,.)

FROM: (Your Email Address) [ ]

RE: Summary (Email Subject)

Please provide a description of the problem (for body of Email)

What steps will reproduce the problem?

- 1.
- 2.
- 3.

Provide any other information you think would be helpful:

Sender's Name: [ ]

Let Adapt It developers know how I use Adapt It [View Usage Log](#)

System Information (automatically included in report):

AI Version:	6.0.0	Release Date:	2011-9-30
Data type:	UNICODE	Free Memory (MB):	1068
Sys Locale:	English (U.S.) en_US	Interface Language:	English (U.S.)
Sys Encoding:	windows-1252	Sys Layout Dir:	System Default
wxWidgets version:	2.8.12	OS version:	32 bit Microsoft Windows NT 6.1

Send the above report to Adapt It developers:

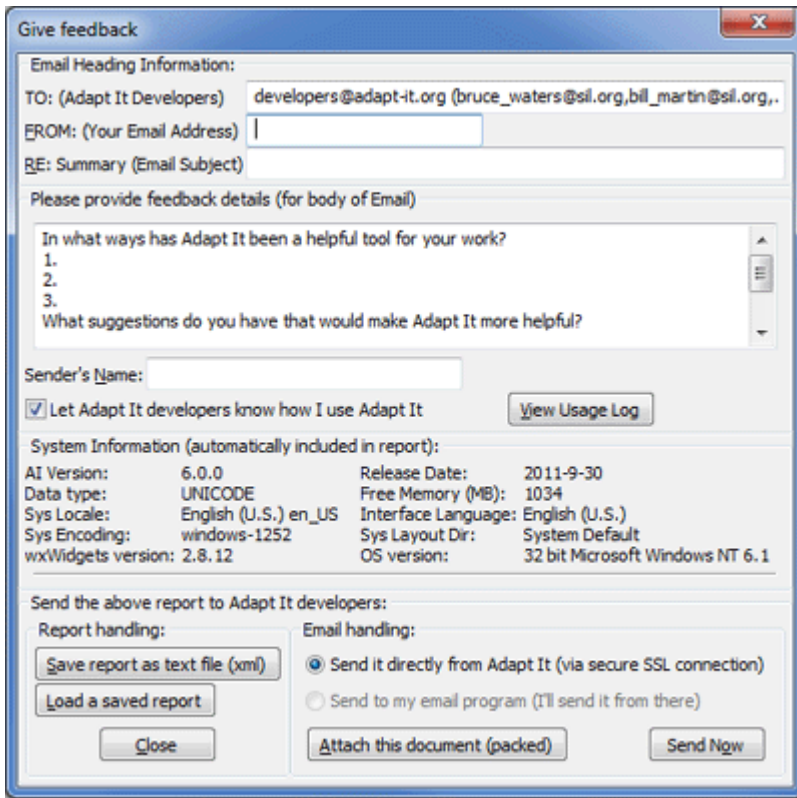
Report handling: [Save report as text file \(xml\)](#) [Load a saved report](#)

Email handling:  Send it directly from Adapt It (via secure SSL connection)  Send to my email program (I'll send it from there)

[Close](#) [Attach this document \(packed\)](#) [Send Now](#)

Just fill in your email address, the email subject/summary, your name and a brief description of the steps to reproduce the problem, using the text in the edit box as a guide for your comments. If a document is open that illustrates the problem, just click on the "Attach the document (packed)" button to include a copy of the packed document along with the report. If you have access to the Internet, you can click on the "Send Now" button to send your report. Adapt It also saves a copy of your report in the \_LOGS\_EMAIL\_REPORTS folder located in its "Adapt It (Unicode) Work" folder. The usage log is automatically included in the email report (unless you untick the check box). It would likely provide information and possible error messages that would help us understand the cause of any problem.

There is also a Help menu item called "**Give Feedback...**". The form looks similar to the form for reporting a problem, but is provided to make giving feedback easier to do via email:



Just fill in your email address, the email subject/summary, your name and your feedback in the edit box provided. Use the text in the box as a guide.

Note: Adapt It sends all such emails to the developers using secured SSL encryption directly from the Adapt It program, so email communications are done safely. The user's computer does not have to have an email client installed to send these reports.

[Back to Top](#)

## Setting Up Adapt It Desktop Launchers For Specific Work Scenarios (using command-line switches/options)

This section describes how to set up desktop icons or "launchers" to make it easy for users to start up Adapt It for a given work session. It also describes how you can configure a launcher with a command-line switch/option that forces Adapt It to run with in a certain mode for the work session. First, we provide a description of the command-line options and how they work. Afterwards we provide information on how to setup desktop launchers for typical Windows and Linux (including Balsa) systems.

The command-line switches:

**-xo** the **-xo** switch can be used to force Adapt It to accommodate the unusual screen density (DPI), font and bitmap handling of the One Laptop Per Child (OLPC) XO computer. This switch forces Adapt It to use double-sized bitmap images in its tool bar, and a double line of controls on its mode bar. This arrangement helps to make the tool bar buttons more accessible and the mode bar items more likely to fit within the screen on an XO computer.

**-wf** the **-wf** switch/option can be used to force Adapt It to always use a specified folder path for its work folder. The **-wf** switch must be followed by the absolute folder path to be used for Adapt It's work folder. Ordinarily Adapt It's work folder would be located at:

**C:\Users\Documents\Adapt It Unicode Work\** on recent versions of Windows systems (Windows Vista, Windows 7 and Windows 8)

**/home//Adapt It Unicode Work/** on most distributions of Linux systems

**/Users//Adapt It Unicode Work/** on Macintosh OS X systems

The **-wf** switch could be used to force Adapt It to place its project folders in a non-standard location such as in a **/data/** folder of an external thumb drive. For example, on Windows the work folder location might

be at:

**E:\data\**

and the command-line Target for this in a launcher would be:

**"C:\Program Files\Adapt It WX Unicode\Adapt\_It\_Unicode.exe" -wf E:\data\**

**Note: Command-line switches/options that include paths or file names containing spaces must be enclosed in double quote marks.**

**-frm** the **-frm** switch can be used to force Adapt It to operate only in reviewing mode. This switch should only be used in special circumstances in which you want the user to produce a very literal gloss or adaptation for the source text. In Reviewing mode Adapt It does not supply adaptations automatically nor jump to the next available hole in the translation. In this mode Adapt It's knowledge base still stores the meanings that are being typed in by the user. But it does not automatically do any lookups or offer any translation equivalents as the user works. This mode therefore forces the user to type in a gloss or adaptation for every source text word or phrase. This switch/mode is being used in places where the administrator feels that a translator does not yet have enough training to be able to interpret potential translational renderings that Adapt It might enter automatically from its knowledge base.

[Other command-line switches may be added in a future version of Adapt It](#)

Setting up desktop launchers in Windows

**1. Install Adapt It version 6.2.1 or newer.**

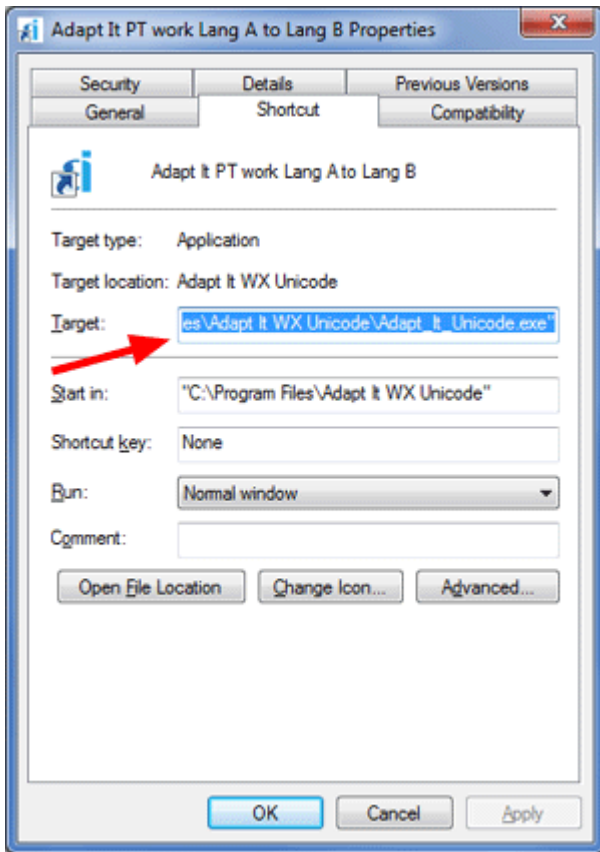
2. Open Windows Explorer and navigate to the Adapt It installation folder, and click on the Adapt It program executable file, normally located at **c:\Program Files\Adapt It WX**

**Unicode\Adapt\_It\_Unicode.exe** for the Unicode version, or **c:\Program Files\Adapt It WX\Adapt\_It.exe** for the Regular (ANSI) version. (On a 64bit Windows machine, the installation folder is within the **Program Files (x86)** folder.)

3. Right-click on the Adapt\_It\_Unicode.exe (or Adapt\_It.exe) file and select "**Send To**" > "**Desktop (create shortcut)**".

4. Close or minimize Windows Explorer and any other programs so you can see the shortcut that was created in the previous step. **Right-click** on that shortcut and select "**Rename**". Then enter a brief name for this launcher, possibly something like "Peter's Adapt It work". The launcher name should be short but worded so that the user(s) can distinguish this launcher from any others you plan to create for other work scenarios.

5. **Right-click** on the desktop shortcut and select "**Properties**". You should see a Shortcut properties dialog that looks something like this:



6. If a command-line switch is desired for this launcher, it would be added at the end of the existing text that is in the **"Target"** edit box (with an intervening space). Press the right arrow key or click in the box to remove the highlight, but keep the existing text there in the edit box. If you want to add a command-line switch, add a space at the end of the existing text path **after the last quote mark**, and then **type the command-line option, for example:**

**-wf e:\data**

7. Click on OK to save and close the Shortcut Properties dialog. Your desktop launcher is now ready to use.

8. Double-click the newly created desktop shortcut icon labeled "Peter's Adapt It work" to launch Adapt It. Adapt It will start running and if a command-line switch was used it will be forced to run in the desired mode.

9. To create other launchers for different Adapt It work scenarios, follow steps 2 through 8 above, adjusting the name of the desktop launcher in step 4, and any command-line switch/option used in step 6 according to the work scenario you want the launcher to run.

Setting up desktop launchers in Linux (Ubuntu)

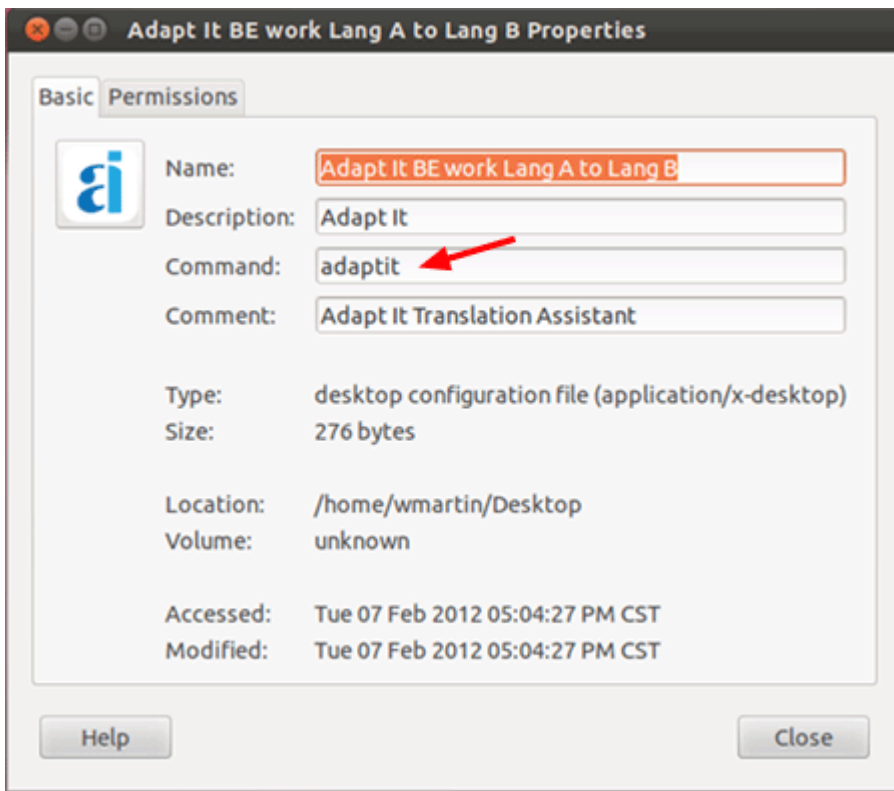
1. **Install Adapt It version 6.2.1 or newer for your Linux distribution.**

2. If you are using the classic Gnome interface, click on **Applications > Office**, and **right-click** on the **Adapt It** menu item, and select **"Add this launcher to desktop"**.

3. If you are using the newer Gnome Unity interface, click on the Ubuntu Dash home icon to open the panel, and type "adaptit" into the search bar at the top. When the Adapt It icon appears click on it and drag it to an empty area of your desktop.

4. Close or minimize any other programs so you can see the desktop shortcut that was created in the previous step. **Right-click** on that shortcut and select **"Rename..."**. Then enter a brief name for this launcher, possibly something like "Peter's Adapt It work". The launcher name should be short but worded so that the user(s) can distinguish this launcher from any others you plan to create for other work scenarios.

5. **Right-click** on the desktop shortcut and select **"Properties "**. You should see an Adapt It Properties dialog that looks something like this:



6. If a command-line switch is desired for this launcher, it would be added to the end of the existing text that is in the "**Command**" edit box (with an intervening space). Press the right arrow key or click in the box to remove the highlight, but keep the existing text there in the edit box. If you want to add a command-line switch, add a space at the end of the existing text path **after the last quote mark**, and then **type the command-line option, for example:**

**-frm**

7. Click on the Close button to save and close the Adapt It Properties dialog. Your desktop launcher is now ready to use.

8. Double-click the newly created desktop shortcut icon labeled "Peter's Adapt It work" to launch Adapt It. Adapt It will start running and if a command-line switch was used it will be forced to run in the desired mode.

9. To create other launchers for different Adapt It work scenarios, follow steps 2 through 8 above, adjusting the name of the desktop launcher in step 4, and any command-line switch/option used in step 6 according to the work scenario you want the launcher to run.

## Trouble Shooting

### Problems in Collaboration with Paratext

Note: the collaboration feature in versions of Adapt It earlier than **6.5.3** can garble the data transfer to Paratext in some circumstances. Extensive changes to the code were made to fix these problems, and the first version released with these fixes within it was 6.5.3. If you run into collaboration problems, please first make sure that 6.5.3 or later is what you are using.

Adapt It relies on a separate utility program that it uses to exchange data between Adapt It and Paratext. Adapt It installs a utility program called **rdwrtp7.exe** that it attempts to execute when collaborating with Paratext on Windows systems. Ordinarily you need not worry about these utility programs. However, we have not been able to test these utility programs on all possible computer system configurations and architectures. So, if you get errors when attempting to setup collaboration between Adapt It and Paratext, it is likely that the problem could be a compatibility problem that we have not yet had to account for between your computer system and the version of the utility program installed by Adapt It. (There is an as yet unverified possibility that Kaspersky antivirus prevents the successful transfer of adaptations to Paratext. Try "killing" the running Kaspersky process in your current work session and then check if collaboration then works correctly.)



When the Paratext development team releases a new version of Paratext, and you have upgraded to the newer version, you should insure that Adapt It can still collaborate with the newer version of Paratext. If you encounter a problem with Adapt It - Paratext collaboration after updating your Paratext installation, please let us know so we can provide an Adapt It update that will correct the problem. Such problems are not very likely to happen between Adapt It and Paratext, but if they do happen it is most likely they would happen after a fairly major update of either Paratext or Adapt It. Please write down the text of any error messages that appear, and include those with any problem reports you send us. If you have Internet access you can try submitting a report directly from Adapt It (see the "Report a Problem..." selection from Adapt It's Help menu), or send us a report via regular email - our email addresses are shown on Adapt It's "About Adapt It..." selection on the Help menu.

### Problems in Collaboration with Bibledit

Note: Most problems in collaboration between Adapt It and Bibledit can be solved by ensuring that your version of Adapt It is at least version 6.5.3 and your version of Bibledit is at least 4.3. See the [Step 1 of the Bibledit setup process](#). If you have done all the setup steps for Bibledit, but are still having problems, the information below may be of some help.

Adapt It relies on a separate utility program that it uses to exchange data between Adapt It and Bibledit. There are different utility programs for different computer architectures (32-bit, 64-bit, etc.) and Ubuntu distributions. Bibledit version 4.3 and newer installs an executable file called **bibledit-rdwrt** for collaboration with Bibledit on Linux systems. Ordinarily you need not worry about this utility program. However, we have not been able to test these utility programs on all possible computer system configurations, and especially on different Linux distributions/architectures. So, if you get errors when attempting to setup collaboration between Adapt It and Bibledit, it is likely that the problem could be a compatibility problem that we have not yet had to account for between your computer system and the version of the utility program installed by Adapt It. If you still find that collaboration with Bibledit is failing, please inform the Adapt It developers about the problem, so we can find a solution and possibly make a corrected version available in a future update. Please write down the text of any error messages that appear, and include that information with any problem reports you send us. If you have Internet access you can try submitting a report directly from Adapt It (see the "Report a Problem..." selection from Adapt It's Help menu), or send us a report via regular email - our email addresses are shown on Adapt It's "About Adapt It..." selection on the Help menu. Please include what distribution of Ubuntu you are running and whether it is a 32-bit (i386) or 64-bit (amd64) system, plus any other details you think might help us to provide a fix. Detailed information about your system should be available by accessing your System Info (via System >Administration > System Monitor, or System Settings > System Info on Unity).