

CAWL in FLEx

1700 SILCAWL Starter database for FLEx

Robert Hedinger

Note: January 26, 2022. Larry Hayashi.

New version of SILCAWL lift available in File attachments at the bottom of this article. The previous LIFT file had ids on senses that caused issues with recent software that interacts with LIFT files (TheCombine.app) and potentially other LIFT-centered processes. Download SILCAWLv02.zip. Unzip the file which includes a folder for the SILCAWLv02.lift file. Follow the directions below.

Introduction

The following are instructions for installing the SIL Comparative African Wordlist (SILCAWL) in FLEx for wordlist collection, followed by doing phonological analysis with Phonology Assistant (PA) and PTEST.

Download SILCAWLv02.zip from the list of files at the bottom of this article.

Note that the zip file includes a folder SILCAWLv02 with SILCAWLv02.lift inside of it. The folder is necessary for LIFT import processes into FieldWorks. FieldWorks looks in the path of the lift file for the presence of other related lift files. If your lift file is in your Downloads folder or on your desktop, FieldWorks will likely halt the import with an error as it tries to find those other files (Downloads and Desktops tend to have LOTS of files). Keep SILCAWLv02.lift inside of the folder.

There are two ways to install it.

1. Add the wordlist to an existing project.
2. Add the wordlist to a new project.

The two are presented in turn.

Fonts and Keyboards

Make sure Charis SIL Compact and Doulos SIL Compact¹ fonts are installed, as well as the Keyboards for IPA and for the writing system for your language.

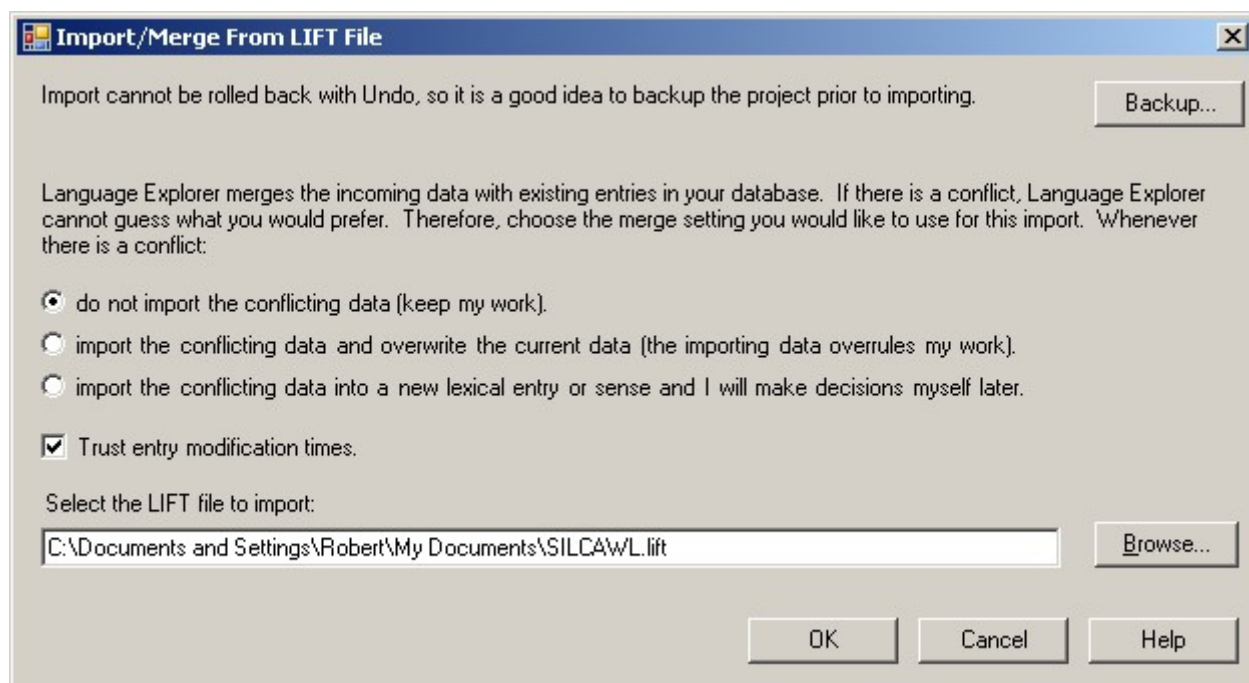
1 Adding the 1700 SILCAWL to an existing project

1.1 Add the 1700 SILCAWL database

Open FLEx.

Back up your project.

Selecting menu File->Import->LIFT Lexicon.... This will open a dialog box:

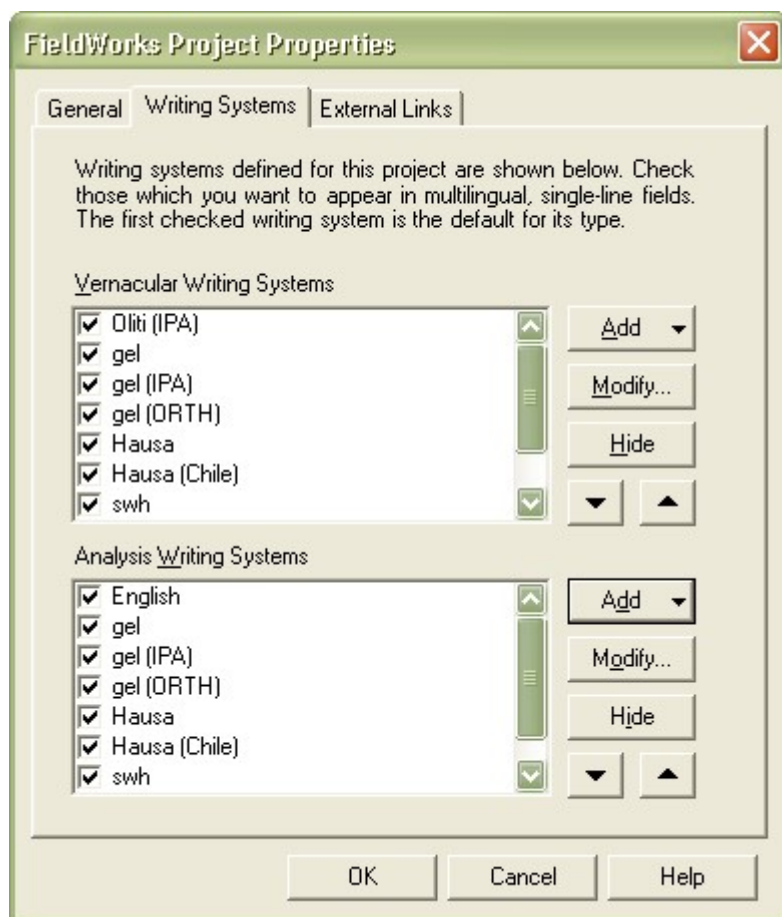


Read the dialog box carefully. If you didn't back up before, you can take the opportunity to do so here.

If your project already has lexicon data, choose carefully what to do when entries in the SILCAWL to be imported could conflict with data already in your project. Click on the Browse... button to select the SILCAWL Lexicon to be imported. Click on OK to complete the import.

When the import finishes, a page will be opened in your web browser reporting how many entries were processed (1700) and how many entries and senses were added or deleted from the project (1700 entries and senses added, 0 deleted if your project had no data to start with; it may be different depending on your import choices if you already had some data). It will also report what parts of speech and writing systems were added to the language project.

Since the SILCAWL includes several writing systems of limited interest, you will want to stop them from appearing in the various entries. To do this, go to menu Format->Setup Writing Systems.... This will open a dialog box:



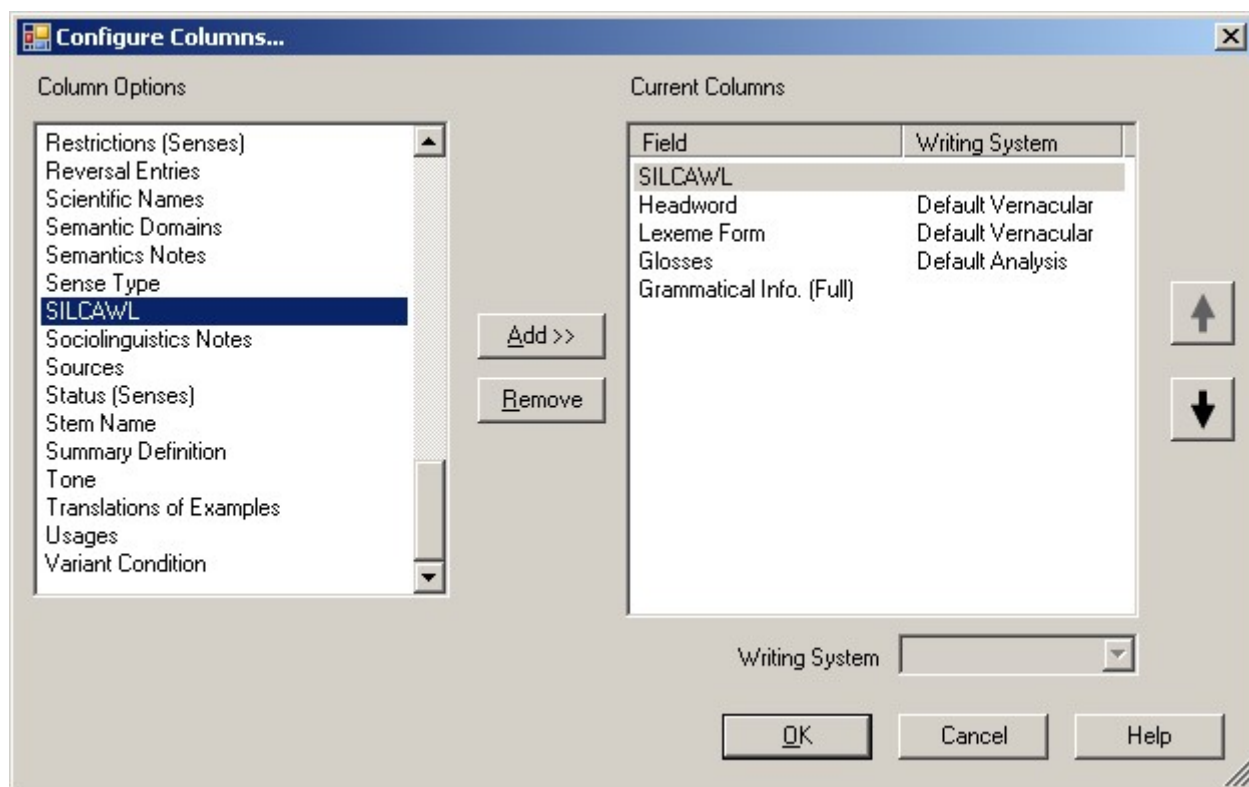
In addition to your project's Vernacular Writing System(s) and Analysis Writing System(s), you will see a large number of other writing systems. Simply select each writing system that does not interest you and click on the appropriate Hide button to the right (note: there is one Hide button to hide a Vernacular Writing System and another to hide an Analysis Writing System).

Click OK when only the writing systems you want to use are left.

1.2 Sorting by number in the SILCAWL

The 1700 SILCAWL is numbered to maintain its semantic ordering. To access this ordering in FLEEx, you will need to configure the entries view to include and sort by the SILCAWL field. To do this:

1. Go to menu Tools->Configure Columns....



1. Scroll through the Column Options at the left and select the SILCAWL field.
2. Click on Add>>
3. Click on the up arrow until the field appears where you want it in Current Columns.
4. Click OK.
5. Click on the column heading SILCAWL to sort by that field (click again to toggle between ascending and descending sort).

OlitFieldWorks Language Explorer

File Edit View Data Insert Format Tools Parser Window Help

English

Lexicon
 Lexicon Edit
 Browse
 Dictionary
 Categorized Entry
 Classified Dictionary
 Bulk Edit Entries
 Bulk Edit Senses
 Reversal Indexes
 Bulk Edit Reversal Entry

Lexicon
Texts & Words
Grammar
Lists

19/Jan/2009 19/Jan/2009 Queue: (-/-/-) No Parser Loaded

SC...	Headword	Lexeme Form	Glosses	Grammatical Inf...
0361	???		in-law, relative by marriage	Noun
0362	???		husband	Noun
0363	???		wife	Noun
0364	???		fellow-wife, co-wife	Noun
0365	???		father-in-law	Noun
0366	???		mother-in-law	Noun
0367	???		brother-in-law	Noun
0368	???		sister-in-law	Noun
0369	???		son-in-law	Noun
0370	???		daughter-in-law	Noun
0371	???		widow	Noun
0372	???		widower	Noun
0373	???		orphan	Noun
0374	???		fiancé (betrothed boyfriend)	Noun
0375	???		fiancée (betrothed girlfriend)	Noun
0376	???		bastard,	Noun

Entry Show Hidden Fields
N in-law, relative by marriage (sem. domains: 4.1.9.2 - Related by marriage.)
 Lexeme Form Oli
 Morph Type stem
 Citation Form Oli
 Entry Type Main Entry
 Note Eng
 Summary Definition Eng
 Plural Tone Oli
 Plural Pronunciation Oli
 Plural Orthography Oli
 Class Number Oli
 Class Oli
 Sense 1
 Gloss Eng in-law, relative by marriage
 Definition Eng
 Grammatical Info. Noun

361/1700

1.3 Distinguishing between SILCAWL and other data

If you need to distinguish between SILCAWL data and other lexicon data that you may have entered, you should be able to do this using the filters at the top of the SILCAWL column. All SILCAWL data has a number in this field; non-SILCAWL data should be blank. So you can restrict the view to only SILCAWL data by choosing Non-blanks in the drop-down box, or to non-SILCAWL data by choosing Blanks.

OlitiFieldWorks Language Explorer

File Edit View Data Insert Format Tools Parser Window Help

English

Lexicon

- Lexicon Edit
- Browse
- Dictionary
- Categorized Entry
- Classified Dictionary
- Bulk Edit Entries
- Bulk Edit Senses
- Reversal Indexes
- Bulk Edit Reversal Entry

Entries

SCAW	Headword	Lexeme Form	Glosses	Grammatical Inf...
Non-blanks	Show	Show All	Show All	Show All
0361	???		in-law, relative by marriage	Noun
0362	???		husband	Noun
0363	???		wife	Noun
0364	???		fellow-wife, co-wife	Noun
0365	???		father-in-law	Noun
0366	???		mother-in-law	Noun
0367	???		brother-in-law	Noun
0368	???		sister-in-law	Noun
0369	???		son-in-law	Noun
0370	???		daughter-in-law	Noun
0371	???		widow	Noun
0372	???		widower	Noun
0373	???		orphan	Noun
0374	???		fiancé (betrothed boyfriend)	Noun
0375	???		fiancée (betrothed girlfriend)	Noun
0376	???		bastard,	Noun

Entry Show Hidden Fields

N in-law, relative by marriage (sem. domains: 4.1.9.2 - Related by marriage)

Lexeme Form Oli

Morph Type stem

Citation Form Oli

Entry Type Main Entry

Note Eng

Summary Definition Eng

Plural Tone Oli

Plural Pronunciation Oli

Plural Orthography Oli

Class Number Oli

Class Oli

Sense 1

Gloss Eng in-law, relative by marriage

Definition Eng

Grammatical Info. Noun

19/Jan/2009 19/Jan/2009 Queue: (-/-/-) No Parser Loaded Filtered 361/1700

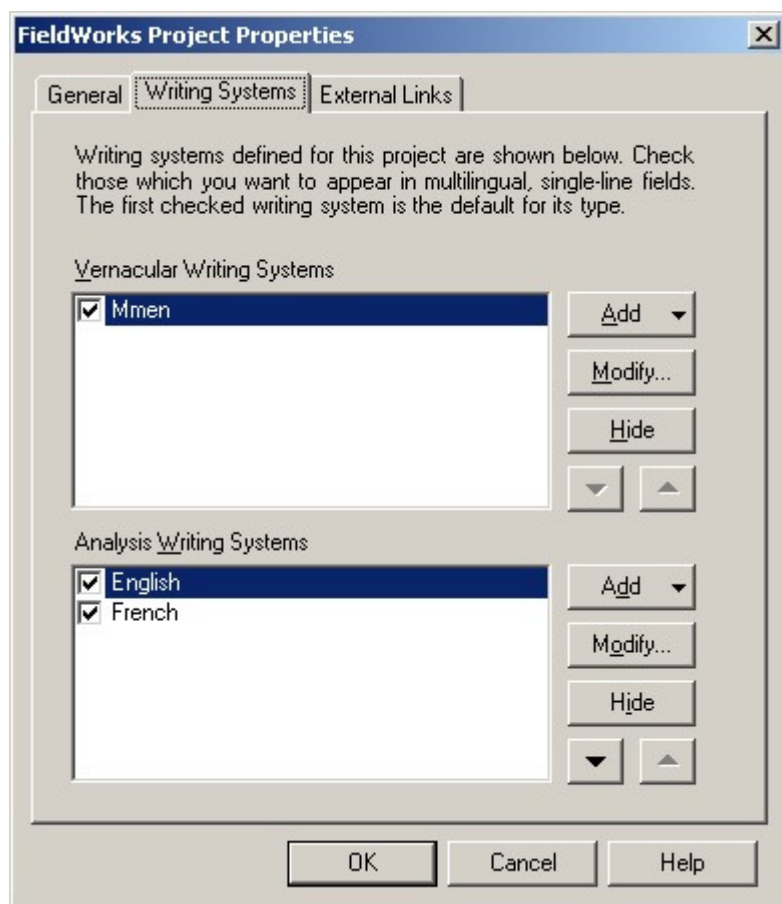
Now arrange the screen layout (see section 3 below).

2 Set up the 1700 SILCAWL for a new language

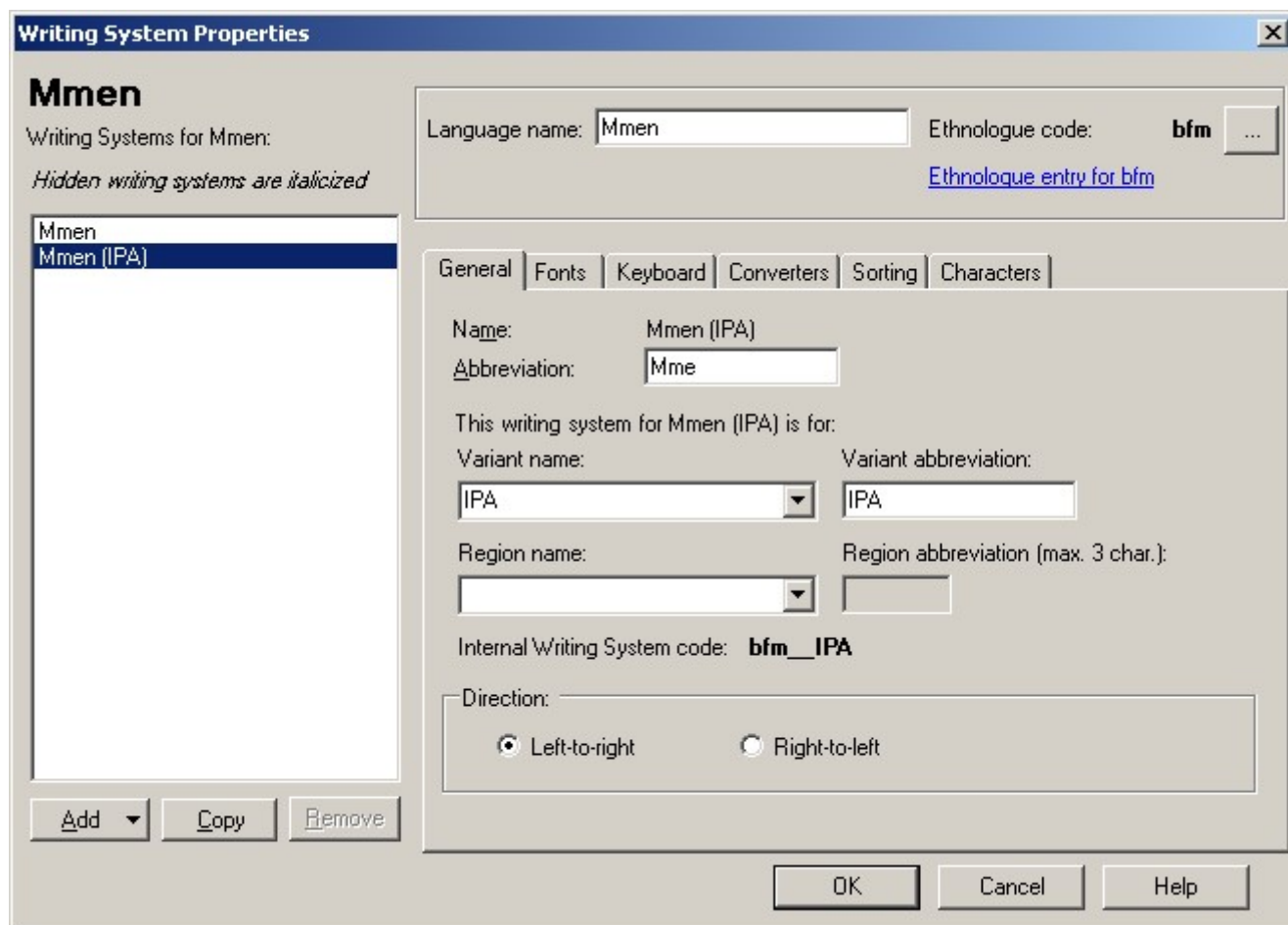
Open FLEx.

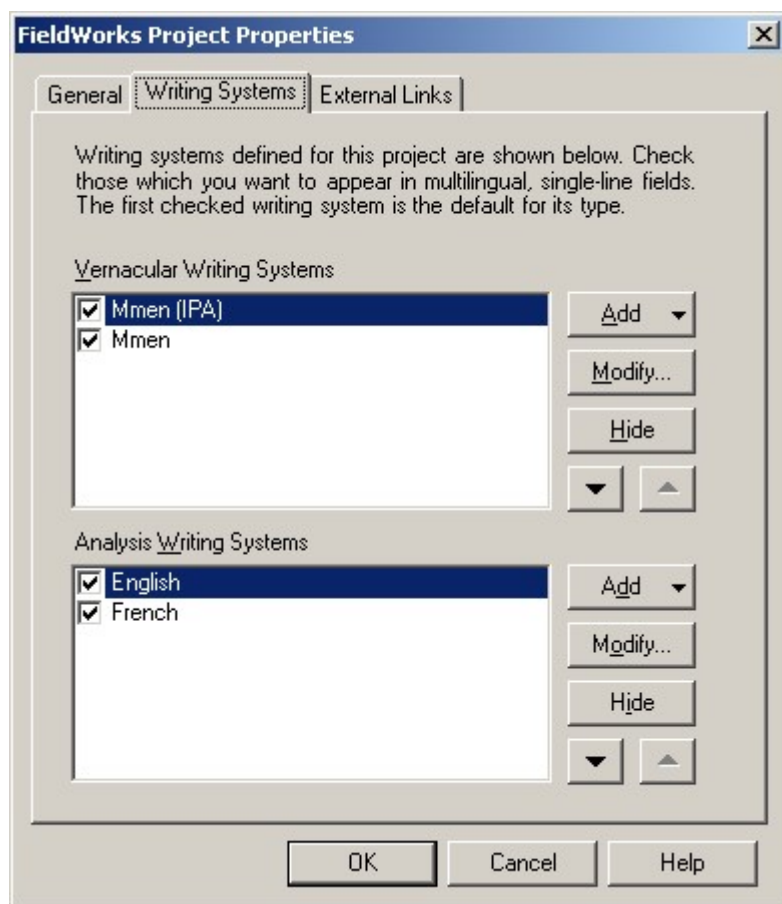
Set up a new project for the language you want to work on.

Add the writing system(s) for your language.



Add an IPA writing system for the same language.





Import the SILCAWL.lift file from Import > Lift

Hide the irrelevant Analysis language(s):

(In this database glosses are available in English, French, Swahili, Hausa, Hausa (CL), etc.) Note: once I have instructions as to how to delete (not hide) a writing system I this should be modified.

3 Arrange the Screen layout

Arrange the Entries and Entry pane so the irrelevant fields are hidden. This needs to be done according to your needs. (Type in any character into the Pronunciation field to make the Tone field appear.)

Use the IPA writing system for the phonetic fields.

Eventually use the Vernacular (non-IPA for orthography).

(The screen below is for the fields we use in Cameroon so we can use PTEST.)

Mmen - FieldWorks Language Explorer

File Edit View Data Insert Format Tools Parser Window Help

Lexicon

- Lexicon Edit
- Browse
- Dictionary
- Categorized Entry
- Classified Dictionary
- Bulk Edit Entries
- Bulk Edit Senses
- Reversal Indexes
- Bulk Edit Reversal Entries

Entries

SC...	Glosses	Pronunciation	Tone	Plural Pronunciation	Plural Tone
0003	head				
0004	forehead				
0005	face				
0006	eye				
0007	eyebrow				
0008	eyelid				
0009	eyelash				
0010	pupil (of eye)				
0011	nose				
0012	bridge (of nose)				
0013	ear				
0014	cheek				
0015	mouth				
0016	lip				
0017	tongue				
0018	tooth				
0019	molar tooth				
0020	palate				
0021	jaw				
0022	chin				

Entry ☐ Show Hidden Fields

n en eye fr œil (sem. domains: 2.1.1.1 - Eye.)

Pronunciation: Mme-IPA

Tone:

Plural Tone: Mme

☒ Plural Pronunciation: Mme-IPA

Sense 1

Gloss: en eye, fr œil

Grammatical Info: Noun

Semantic Domains: 2.1.1.1 - Eye

SCAW: 0006

Alternate Forms

Grammatical Info. Details

Category Info: Noun

09/Aug/2008 23/Feb/2009 Queue: (-/-/-) No Parser Loaded 6/1700

Note the 1700 wordlist number is both in the Source field and the SILCAWL custom field. It is in the Source field so PA (Phonology Assistant) can use it as reference number. Later the user may want to use the Source field for other comments on where the words came from. It is also in the SILCAWL field where it can be kept for future reference.

There are, of course, other ways to set up the details, so this is just one possibility.

This is just for getting started. I have not yet developed the ideas for converting from IPA to orthography after phonological analysis. Hopefully the next version of FLEx will help with this.

Note: Charis SIL Compact and Doulos SIL Compact fonts are now available and have a better line spacing for those who do not have stacked diacritics.